



Oide

Tacú leis an bhFoghlaim
Ghairmiúil i measc Ceannairí
Scoile agus Múinteoirí

Supporting the Professional
Learning of School Leaders
and Teachers

AI to Support Learning and Teaching in the RE Classroom

 @Oide_RE
 www.oide.ie



Learning Intentions



Oide

During this PLE, we will:



consider possible challenges and opportunities of using AI in learning and teaching in the RE classroom.



explore approaches and strategies to integrate AI tools in the RE classroom to enhance learning and teaching.



What is AI?

AI refers to **machine-based** systems that can, given a set of **human-defined objectives**, make predictions, recommendations, or **decisions** that influence real or virtual environments. AI systems interact with us and act on our environment, either directly or indirectly. Often, they appear to operate **autonomously** and can **adapt** their behaviour by learning about the context.

UNICEF, *Policy Guidance on AI for Children* (2021), p.16

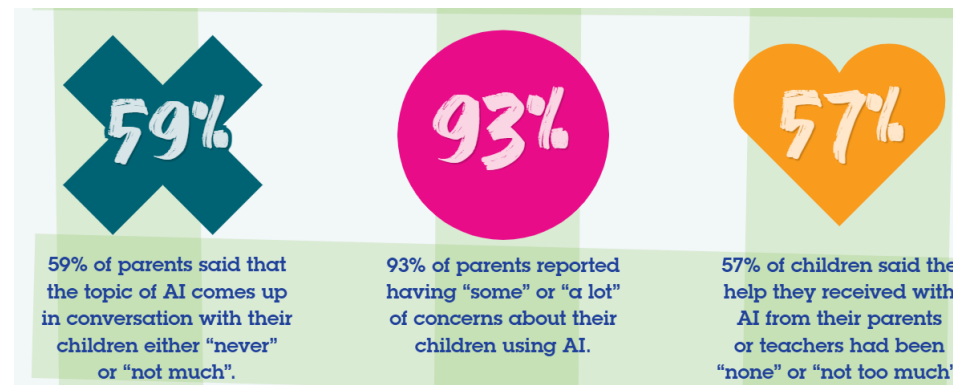
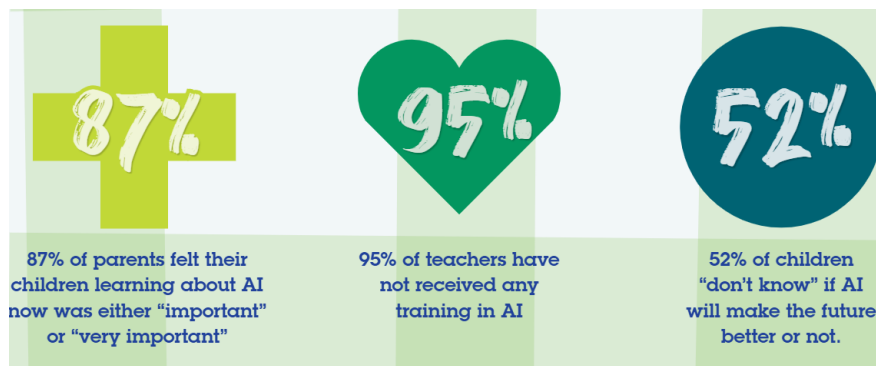
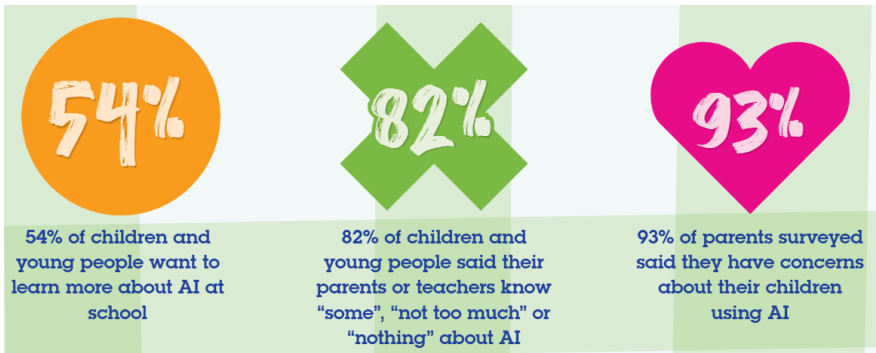




What is AI?

Artificial intelligence (AI) is technology that enables computers and machines to simulate human learning, comprehension, problem solving, decision making, creativity and autonomy.

IBM, *What is AI?* (2024)





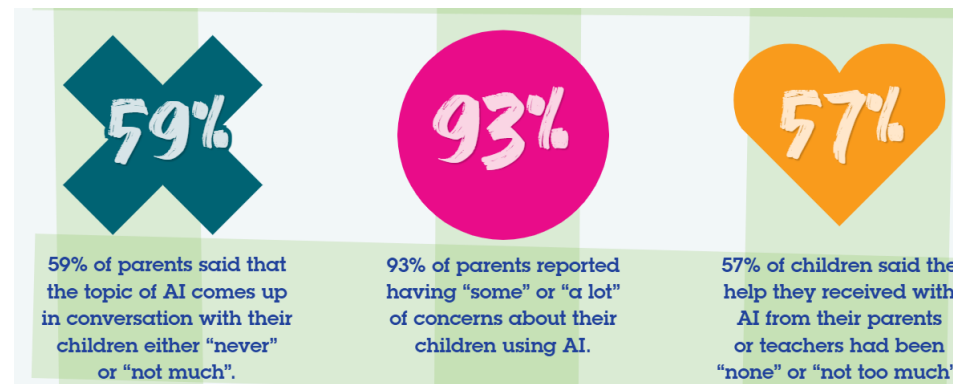
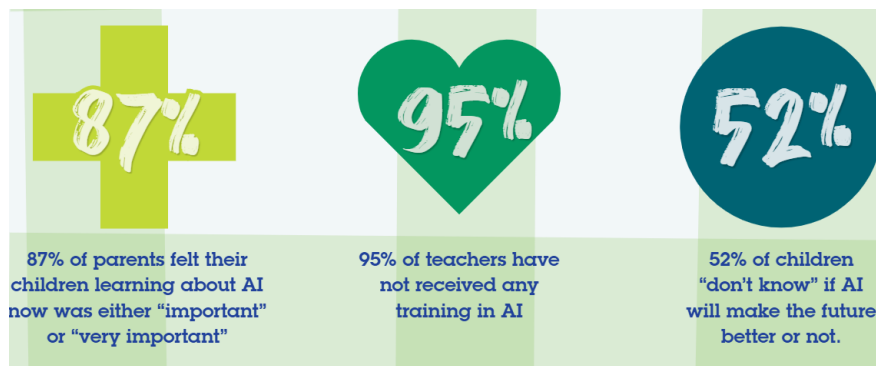
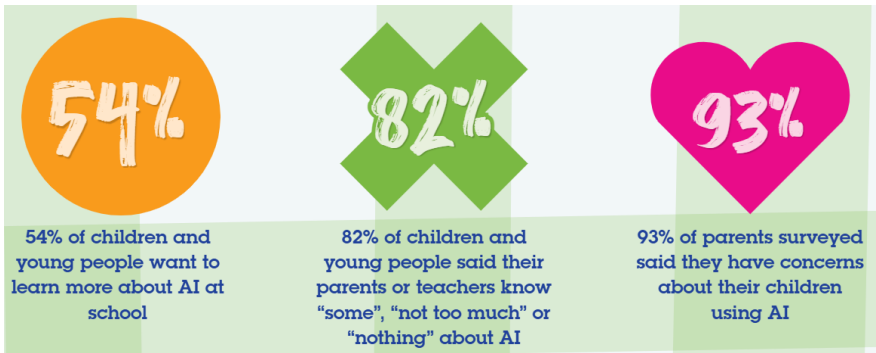
54% of children and young people want to learn more about AI at school



82% of children and young people said their parents or teachers know "some", "not too much" or "nothing" about AI



93% of parents surveyed said they have concerns about their children using AI





87%

87% of parents felt their children learning about AI now was either “important” or “very important”



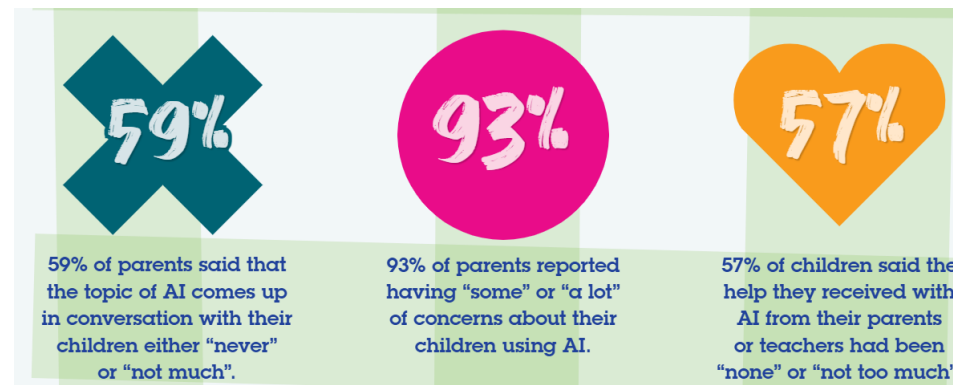
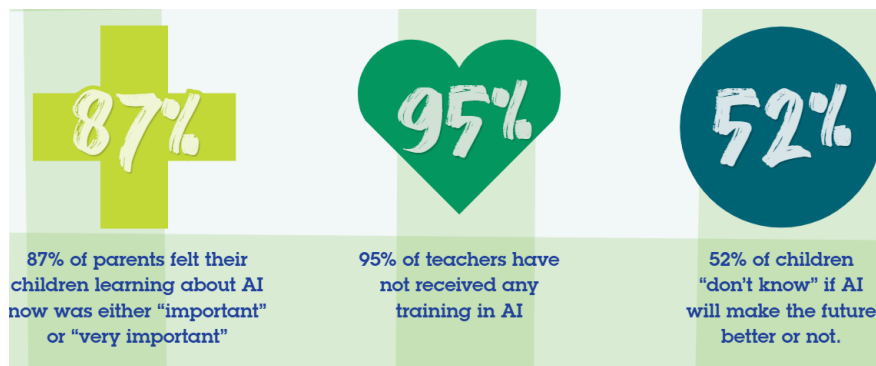
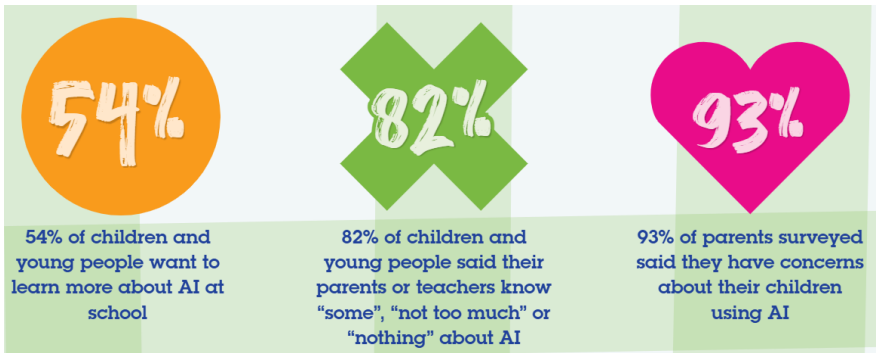
95%

95% of teachers have not received any training in AI



52%

52% of children “don’t know” if AI will make the future better or not.





59%

59% of parents said that the topic of AI comes up in conversation with their children either “never” or “not much”.

93%

93% of parents reported having “some” or “a lot” of concerns about their children using AI.

57%

57% of children said the help they received with AI from their parents or teachers had been “none” or “not too much”.

The Evolution of AI



Oide

1948:
Alan Turing



1966:
First Chatbot (Eliza)



1997:
Deep Blue



2020:
ChatGPT



1956:
Dartmouth Conference



1980s:
AI Winter



2006:
Deep Learning AI



2025:
The future?



Narrow / Weak AI



Artificial Intelligence limited to a specific area or one narrow task



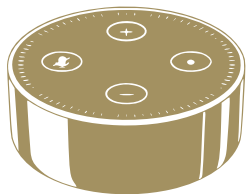
Smartphone Camera



Search Engines



Fraud Detection



Virtual Assistants



Navigation



Social Media



Generative AI / LLMs

LLMs are an AI tool that have been trained on vast amounts of text to predict responses to requests and questions one word at a time.

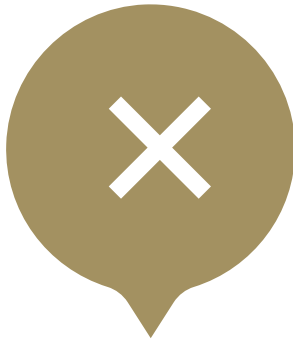
AI Explained: What is AI? www.webwise.ie



The Challenges of AI



Oide



Responses may be biased, inaccurate or harmful



Information requires checks



New challenges may emerge



Data privacy and security



Ethical concerns around its use

Possible Benefits of AI



Oide

Can process vast amounts of data

Can improve efficiency



Can provide tailored responses

Can help with generating ideas

Can help research and innovation

AI: Strategies, Guidelines and Frameworks



Oide

... using AI to benefit our economy and society, through a people-centred, ethical approach to its development, adoption and use.

Digital Strategy for Schools to 2027

... learners need enhanced digital literacy skills to function and participate fully in a digital world.

Ireland's Literacy, Numeracy and Digital literacy Strategy 2024-33

... the potential of AI to enable new forms of teaching, learning and education management and enhance learning experiences and support teacher tasks.

UNESCO AI Competency Framework for Teachers

Interim Guidelines for use of AI in the Public Service

The recently developed general language models can be a valuable tool in training and education.

Guidance for Generative AI in Education and Research

AI should be at the service of the development of human capabilities for inclusive, just and sustainable futures.

UNESCO AI Competency Framework for Students

It is essential that education systems prepare students not only with the knowledge and skills to use AI but also with insight into the potential impact of technology on societies and the environment at large.

Popular AI Tools



Oide



Microsoft Copilot



ChatGPT



Google Gemini



Notebook LM

AI or Reality?



Oide



AI or Reality?



Oide



AI or Reality?



Oide

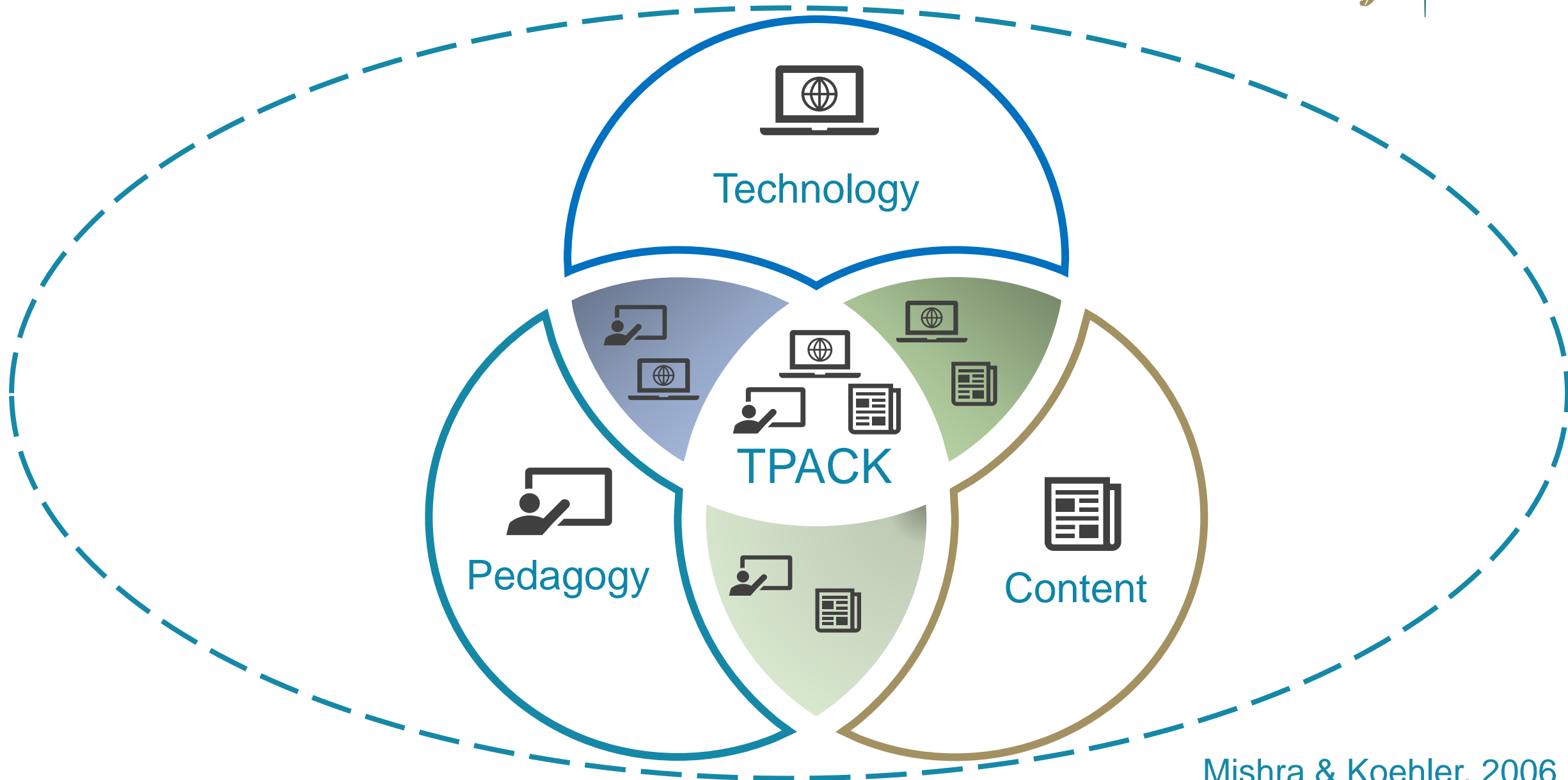


AI or Reality?

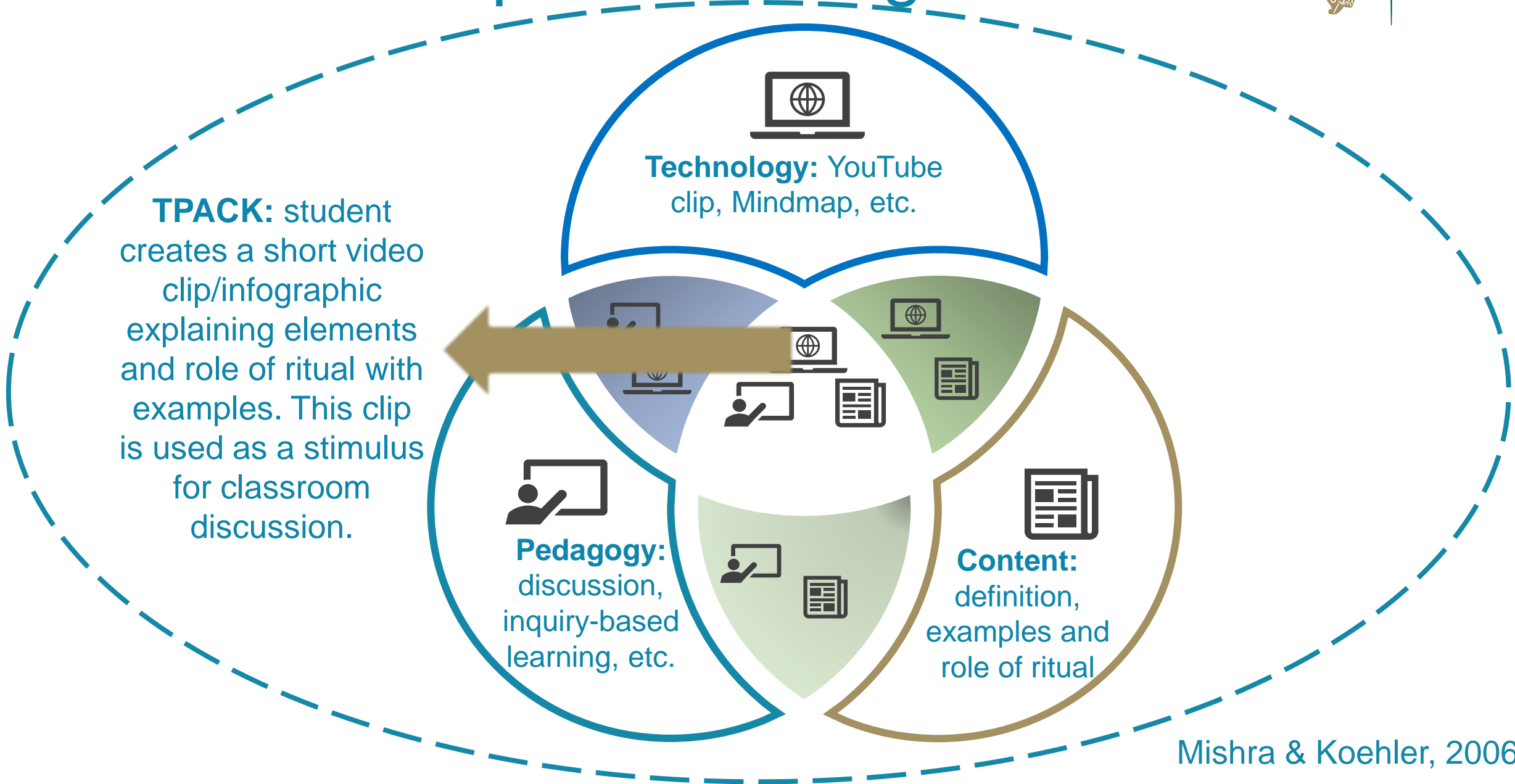


Oide





TPACK Example: Non-religious Rituals



Using Prompt Frameworks in the RE Classroom



Oide



[Rase Framework Padlet Link](#)



RASE Framework



Oide



ROLE

Give the Gen AI/LLM a role and provide a context

ASK

Define the task you want it to perform

SPECIFIC

Be specific about format, length, style, etc. required

EXPERIMENT

Refine your prompt; ask Gen AI/LLM for suggestions

Acceptable Use Policy (AUP)



Oide

... a document which addresses all rights, privileges, responsibilities and sanctions associated with the use of the internet and digital technologies within the school, including online and offline usage.

Keeping Your School's AUP Updated, webwise.ie

Learning Intentions



Oide

During this PLE, we will:



consider possible challenges and opportunities of using AI in learning and teaching in the RE classroom.



explore approaches and strategies to integrate AI tools in the RE classroom to enhance learning and teaching.



Reference List

- Barnardos, Exploring AI with Children & Young People
- Digital Strategy for Schools to 2027
- Ethical Guidelines on the Use of AI and Data in Teaching and Learning for Educators
- Interim Guidelines for use of AI in the Public Service
- Ireland's Literacy, Numeracy and Digital literacy Strategy 2024-33
- UNESCO AI Competency Framework for Students
- UNESCO AI Competency Framework for Teachers
- UNESCO Guidance for Generative AI in Education and Research
- UNICEF, Policy Guidance on AI for Children
- www.webwise.ie

Reflection



Oide



Future

Facts



Findings

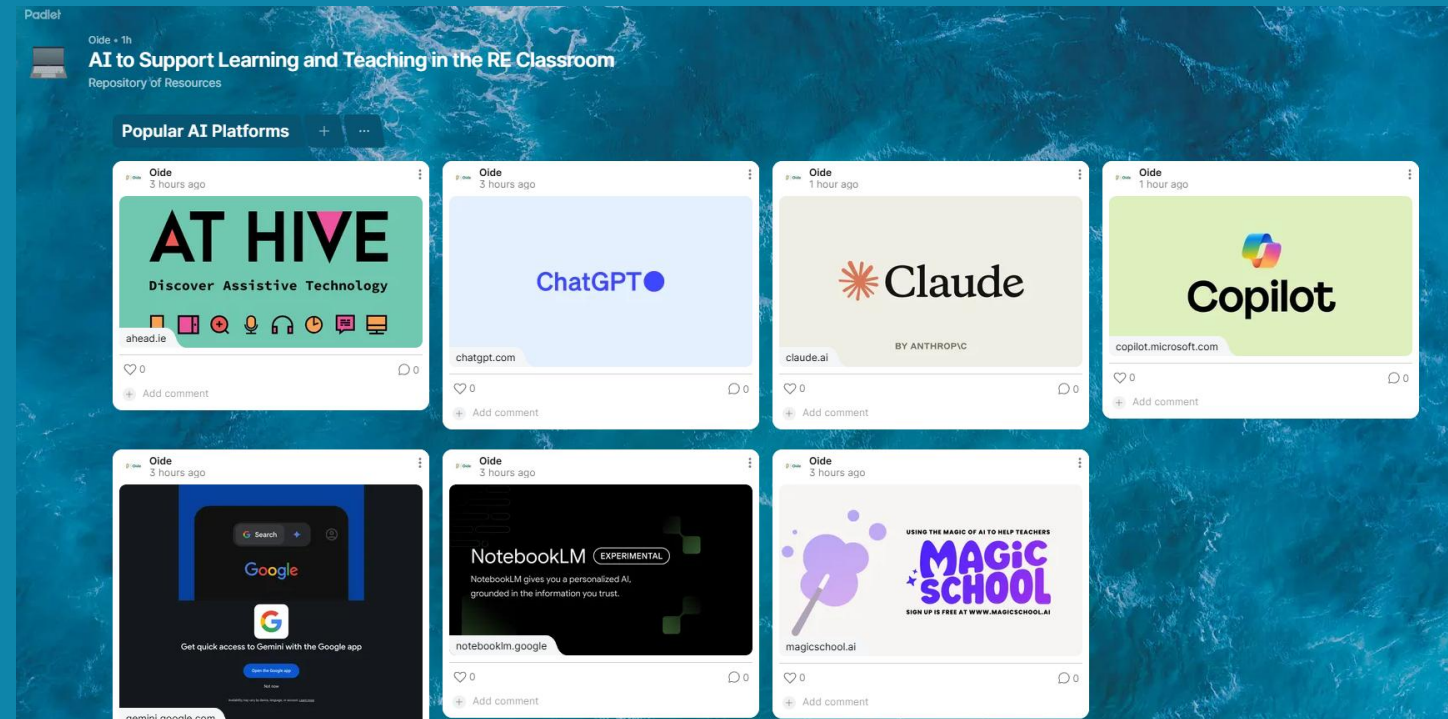
Feelings





Key Documents

<https://tinyurl.com/3t2x2xwj>



Keeping in Touch



Oide

 @Oide_RE


 <https://oide.ie/contact/>

Thank you!

Good News!

If you would like to receive news and updates on all things Religious Education, the Oide Religious Education mailing list is now available through the QR code below.



 Oide Office of Religious Education Supporting the Professional Learning of School Leaders and Teachers

Tacú leis an bhFoghlaim
Ghairmiúil i measc Ceannairí
Scoile agus Múinteoirí

Supporting the Professional
Learning of School Leaders
and Teachers