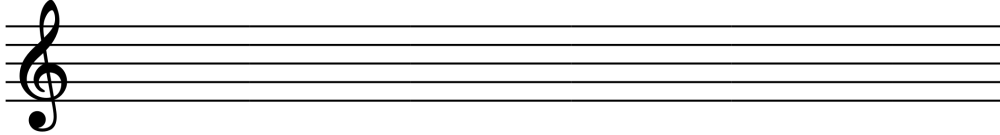




## 12 note Chromatic Scale



### 1. Original

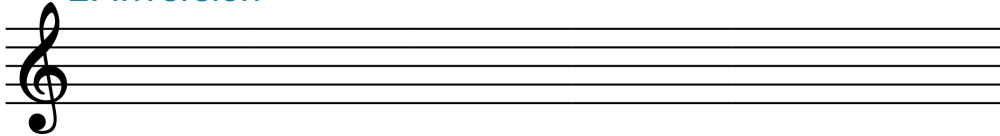


Create your cell from the scale above

## Compositional Techniques

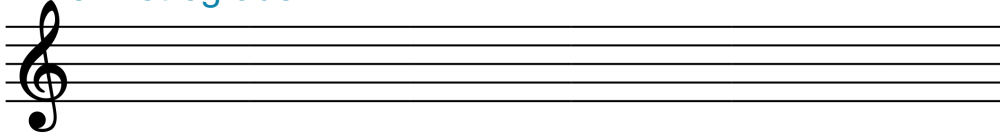
Rewrite your cell..

### 2. Inversion



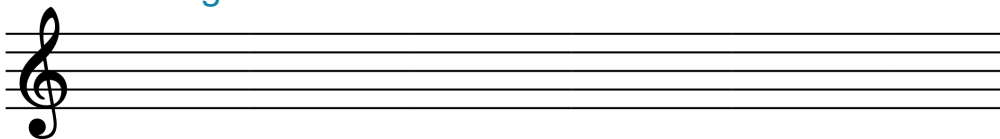
...upside-down

### 3. Retrograde



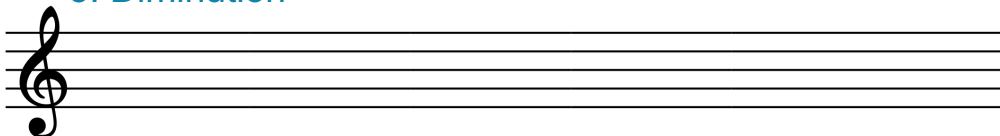
...backwards starting with the last note

### 4. Retrograde Inversion



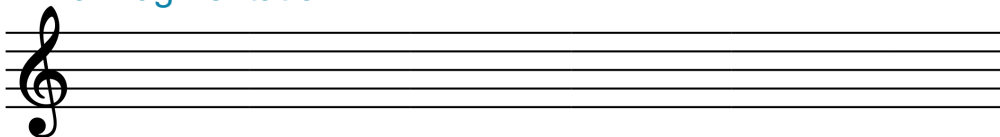
...upside-down and backwards

### 5. Diminution



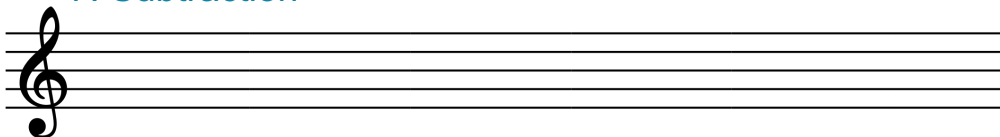
...with the note values halved

### 6. Augmentation



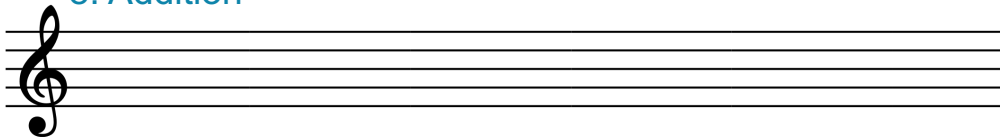
...with the note values doubled

### 7. Subtraction



...repeat and take out the last note each time

### 8. Addition



...repeat and add the next note each time



## 12 note Chromatic Scale



### 1. Original



Create your cell from the scale above

## Compositional Techniques

Rewrite your cell..

### 2. Inversion



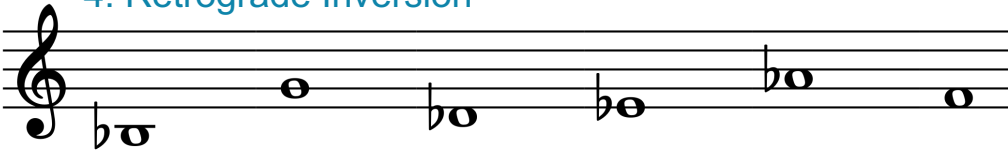
...upside-down

### 3. Retrograde



...backwards starting with the last note

### 4. Retrograde Inversion



...upside-down and backwards

### 5. Diminution



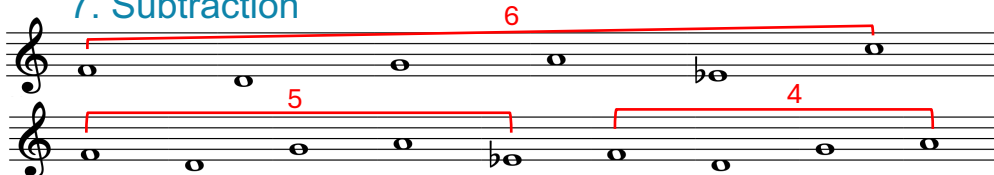
...with the note values halved

### 6. Augmentation



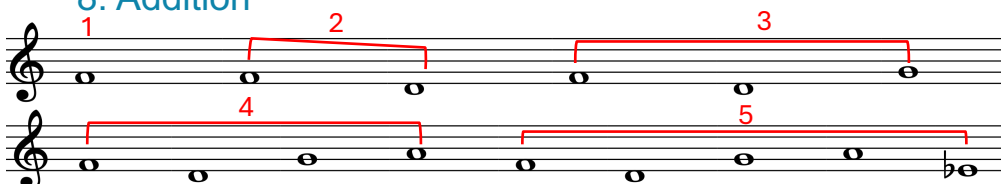
...with the note values doubled

### 7. Subtraction



...repeat and take out the last note each time

### 8. Addition



...repeat and add the next note each time