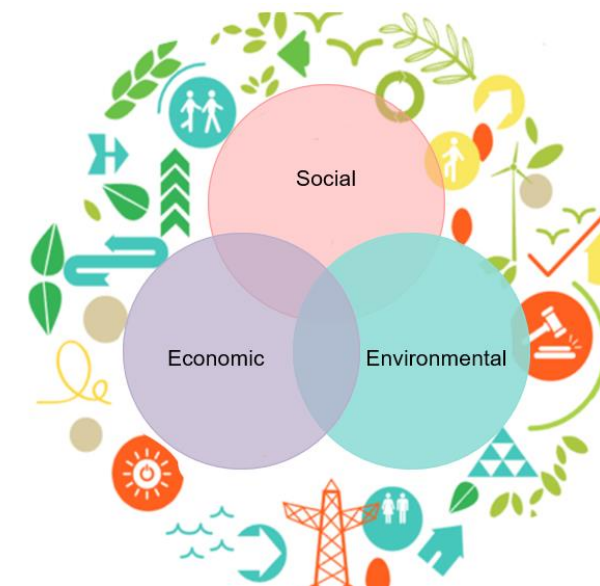




Oide

Junior Cycle Home Economics



PLE Workshop 2024-2025



Personal Reflection – Take a moment to consider:



Oide

How has my understanding of formative assessment been extended today?	How might this affect my classroom planning?	How might this affect department planning?



Personal Reflection – Take a moment to consider:



Oide

How has my understanding of the three interlinked pillars of sustainability been extended today?

How might this affect my classroom planning?

How might this affect department planning?



Department Reflection



Oide

How could we adapt our use of Learning Intentions, Success Criteria and Formative Feedback to support student-centred learning in our Home Economics classrooms?



Department Reflection



Oide

Considering our department's units of learning, where are the opportunities to engage with the three interlinked pillars of sustainability; economic, social and environmental?



Department Reflection



Oide

What classroom practices, theory and practical, will further support our students to develop the attitudes, knowledge, understanding, skills, and values needed to incorporate the three interlinked pillars (economic, social and environmental) of sustainability into their daily lives?