



Tacú leis an bhFoghlaim

Ghairmiúil i measc Ceannairí

Scoile agus Múinteoirí

Supporting the Professional

Learning of School Leaders

and Teachers

# Bí Cineálta:

## *Procedures to Prevent and Address Bullying Behaviour for Primary and Post-Primary Schools*

## Online Workshop

Facilitators:

# Overview



Oide

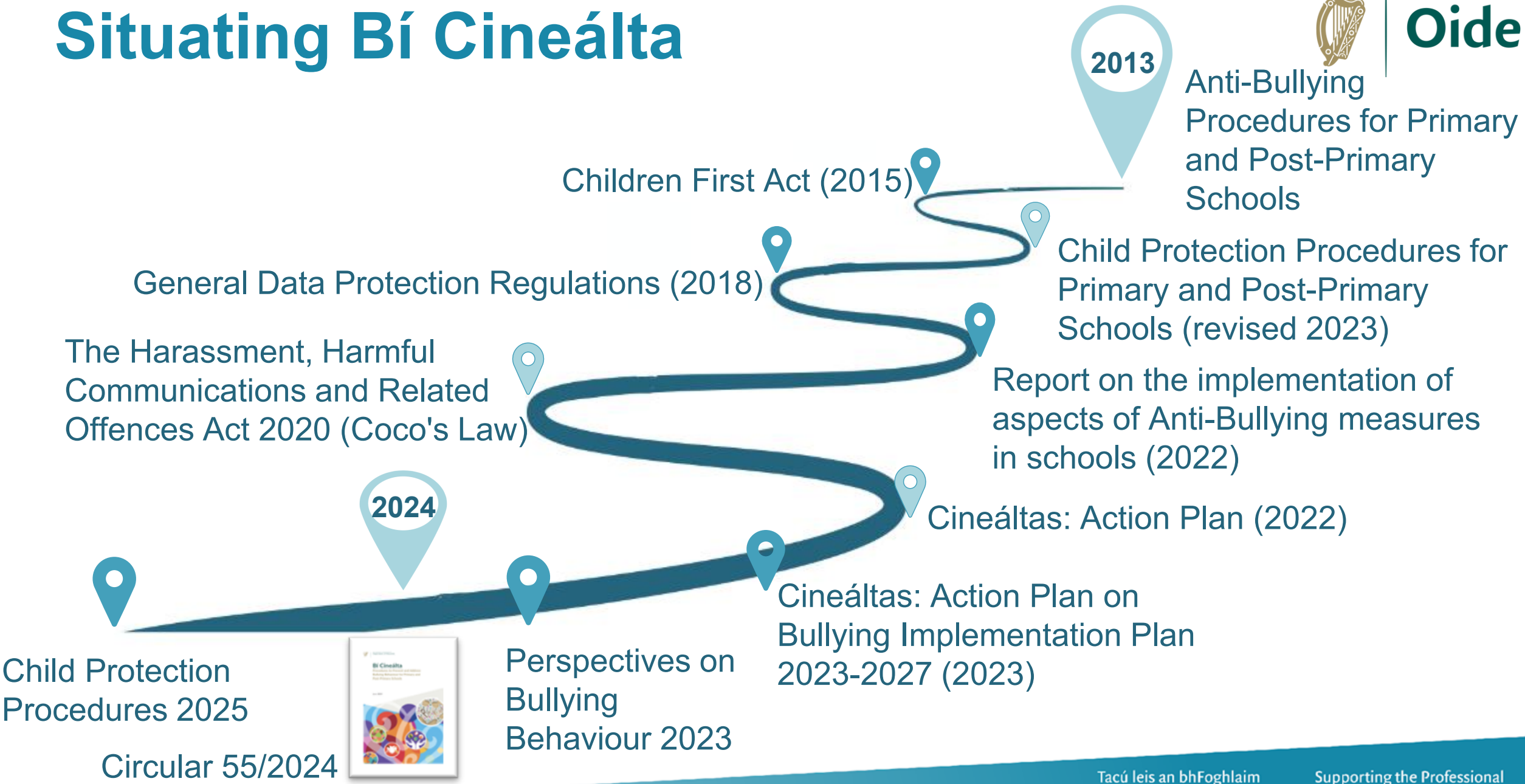
## In this session we will:

- Situate Bí Cineálta
- Consider a whole education approach to prevent and address bullying behaviour
- Examine the definition of bullying – Is it bullying?
- Explore the Bí Cineálta policy and appendices
- Clarify the procedural requirements to address and record bullying behaviour
- Identify prevention strategies within the four Key Areas of the Wellbeing Policy Statement and Framework for Practice
- Oversight

# Situating Bí Cineálta



Oide



# Supporting Documents

Wellbeing Policy Statement and Framework for Practice (2019)

Cineáltas Action Plan on Bullying (2022)

Cineáltas Action Plan on Bullying Implementation (2023)

Bí Cineálta Procedures (2024)

Circular 55/2024

**Section 1.1, Bí Cineálta**

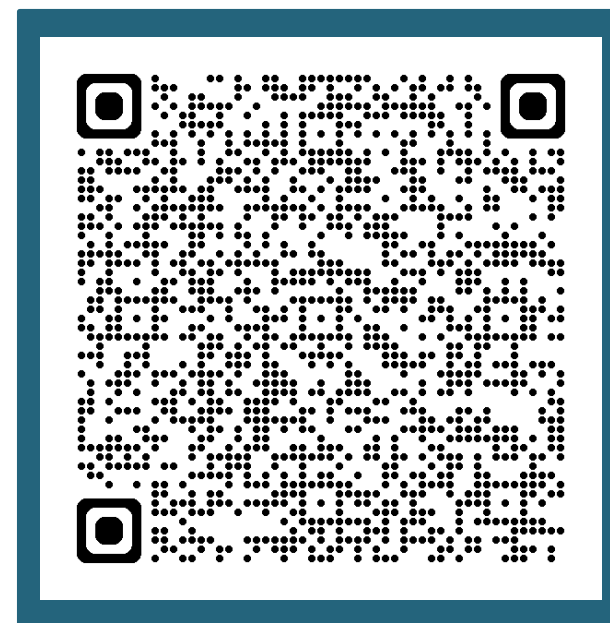
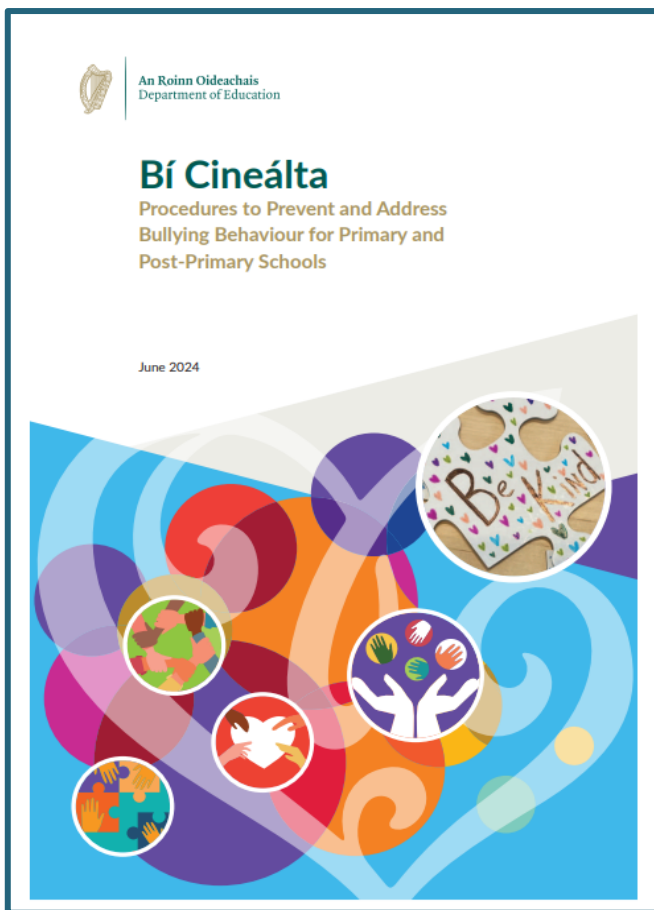


Tacú leis an bhFoghlaim  
Ghairmiúil i measc Ceannairí  
Scoile agus Múinteoirí

Supporting the Professional  
Learning of School Leaders  
and Teachers



# Bí Céineálta Procedures



<https://tinyurl.com/z6fmhan5>



# Bí Cineálta: Content Overview

**Section 1:** Introduction

**Section 2:** Bullying Behaviour

**Section 3:** Impact of Bullying Behaviour

**Section 4:** School Bí Cineálta Policy to Prevent and Address Bullying Behaviour

**Section 5:** Preventing Bullying Behaviour

**Section 6:** Addressing and Recording Bullying Behaviour

**Section 7:** Oversight/Appendices

**Appendix A:** School Bí Cineálta Policy to Prevent and Address Bullying Behaviour

**Appendix B:** Student-Friendly Bí Cineálta Policy

**Appendix C:** Guide to Addressing Bullying Behaviour

**Appendix D:** Guide to Providing Bullying Behaviour Update

**Appendix E:** Review of the Bí Cineálta Policy

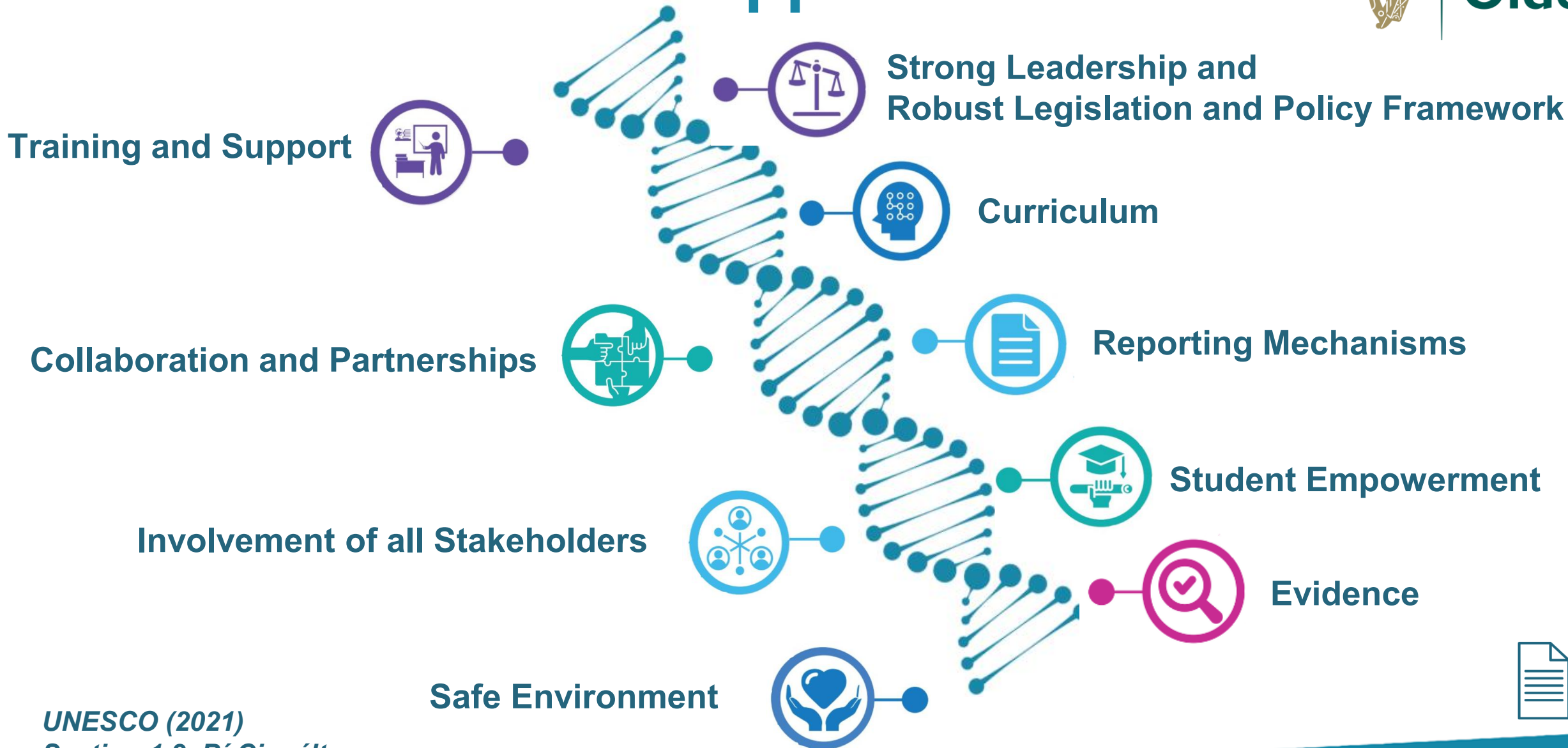
**Appendix F:** Notification regarding the BoM's annual review of the Bí Cineálta Policy



# A Whole Education Approach



Oide



UNESCO (2021)  
Section 1.2, *Bí Cineálta*



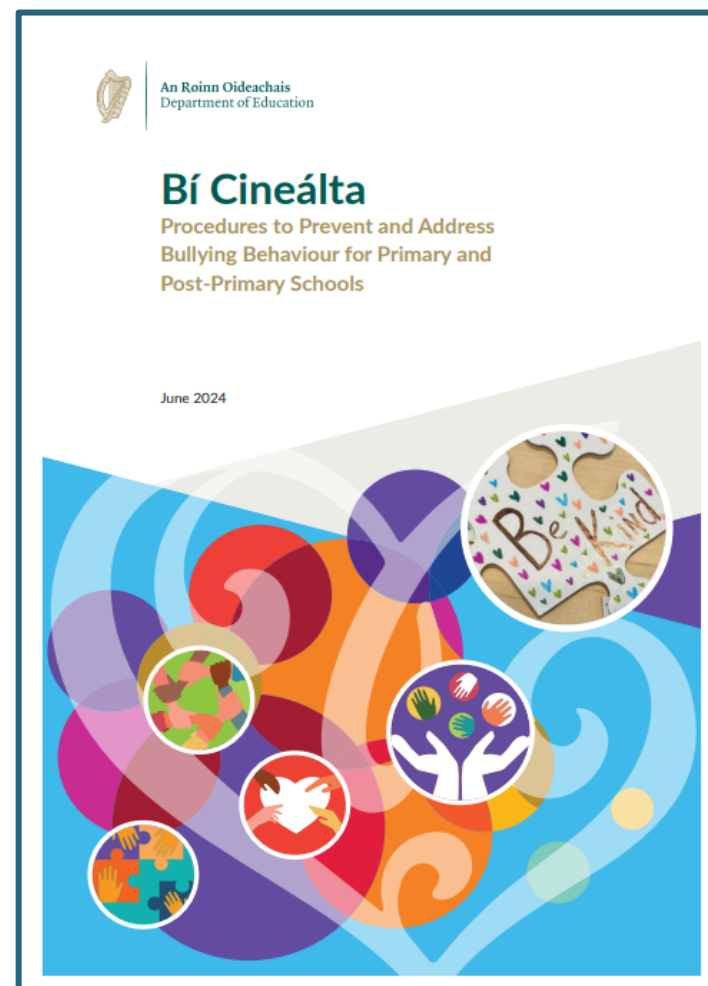
Tacú leis an bhFoghlaim  
Ghairmiúil i measc Ceannairí  
Scoile agus Múinteoirí

Supporting the Professional  
Learning of School Leaders  
and Teachers



Oide

# Bullying Behaviour



Tacú leis an bhFoghlaim  
Ghairmiúil i measc Ceannairí  
Scoile agus Múinteoirí

Supporting the Professional  
Learning of School Leaders  
and Teachers





## Definition of Bullying Behaviour

Bullying is **targeted** behaviour, online or offline, that causes harm. The harm caused can be physical, social and/or emotional in nature. Bullying behaviour is **repeated** over time and involves an **imbalance of power** in relationships between two people or groups of people in society.





# How does bullying behaviour occur?

Bullying behaviour can take many forms and can occur separately or together. These can include the following, which is not an exhaustive list:

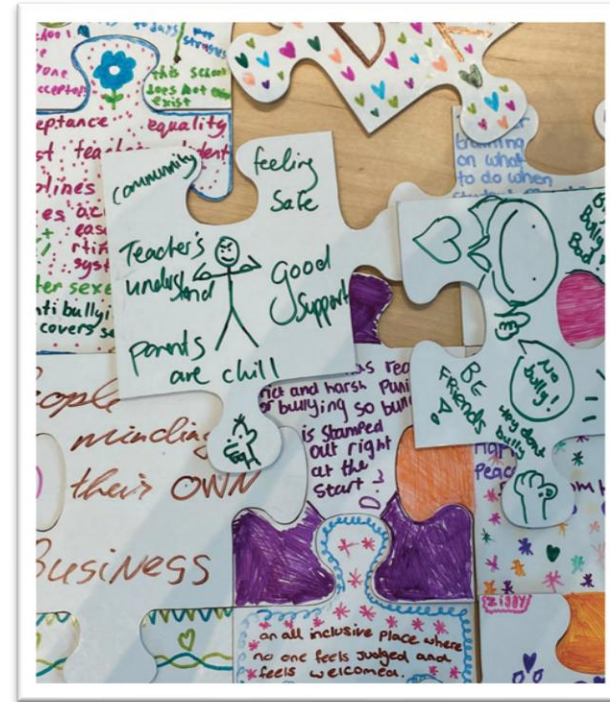
Direct	Indirect
Physical	Exclusion
Verbal	Relational
Written	Online Bullying Behaviour
Extortion	

# Types of Bullying Behaviour



There are many different types of bullying behaviour. These can include the following which is not an exhaustive list:

- Disablist bullying
- Gender identity bullying
- Exceptionally able bullying
- Homophobic/Transphobic bullying
- Physical appearance bullying
- Racist bullying
- Poverty bullying
- Religious identity bullying
- Sexist bullying
- Sexual harassment



# How can bullying behaviour impact on the person experiencing it?



## Bullying behaviour can:

- have a severe and profound impact on people in both the short and long term
- cause stress, insecurity, humiliation and anxiety
- have a detrimental effect on experiences of education and education outcomes
- damage self-confidence resulting in lowering self-esteem
- cause changes in mood and behaviour
- in extreme cases, result in mental health difficulties.

## Cyber-bullying (Online Bullying Behaviour):

- can often go unnoticed as much online activity is not subject to adult supervision
- offers a degree of anonymity that can protect the person(s) causing harm from being detected
- can have a wider audience
- can be difficult to have offensive comments or material removed.

# Where can bullying behaviour occur?



Bullying behaviour can happen anywhere, online or offline, at any time, but there are certain times and places where bullying behaviour can be more likely to occur. These can include the following, which is not an exhaustive list:

## Inside the school

- School yard
- In the classroom
- Other

## Outside the school

- Coming to and from school
- Organised clubs and groups

## Cyber-bullying (Online)





# Bullying Behaviour Outside the School



Oide

*A school is not expected to deal with bullying behaviour that occurs when students are not under the care or responsibility of the school. However, where this bullying behaviour has an impact in school, schools are required to support the students involved. Where the bullying behaviour continues in school, schools should deal with it in accordance with their Bí Cineálta policy.*



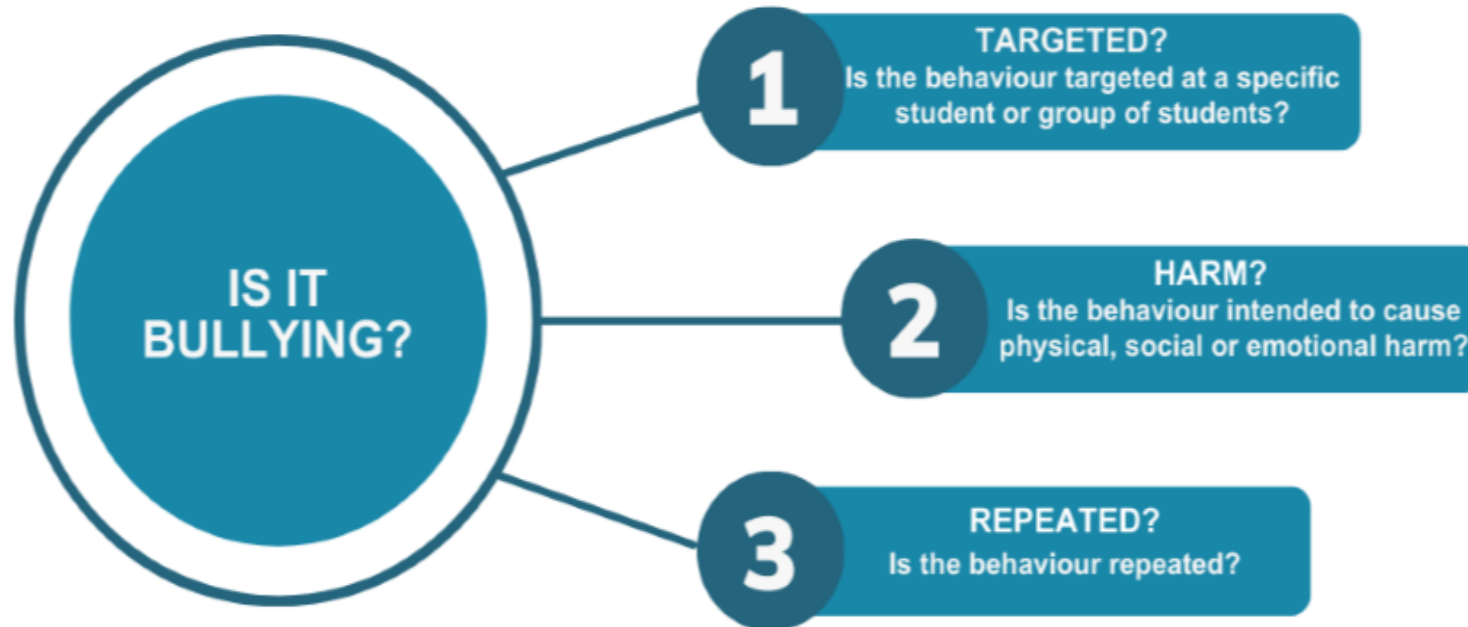
pg. 43



# Identifying if Bullying Behaviour has Occurred?



Oide



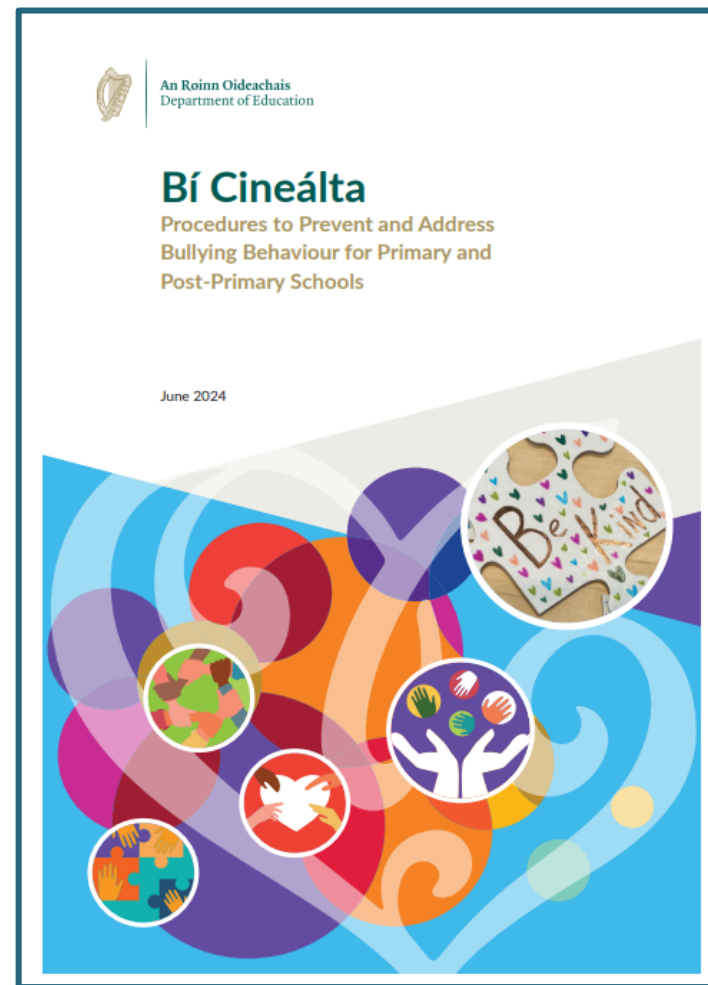
If the answer to each of the questions is Yes, then the behaviour is bullying behaviour and the behaviour should be addressed using the Bí Cineálta Procedures.

If the answer to any of the questions is No, then the behaviour is not bullying behaviour. Strategies to deal with inappropriate behaviour are provided for within the school's Code of Behaviour.



Oide

# Bí Cineálta Policy and Appendices



Tacú leis an bhFoghlaim  
Ghairmiúil i measc Ceannairí  
Scoile agus Múinteoirí

Supporting the Professional  
Learning of School Leaders  
and Teachers



# Bí Cineálta Policy – Requirements

## Bí Cineálta Policy

Each school is required to develop and implement a Bí Cineálta policy that sets out how the school community prevents and addresses bullying behaviour.

The Bí Cineálta policy must clearly indicate the teachers in the school who are responsible for addressing bullying behaviour.

A template document which **must** be used by all schools as a basis for developing their Bí Cineálta Policy is contained in **Appendix A – pg. 54.**

## Student Friendly Bí Cineálta Policy

Schools **must** develop a student-friendly version of their Bí Cineálta Policy to Prevent and Address Bullying Behaviour and engage with the school community to develop and review this policy.

Schools **can** use the student-friendly policy template contained in **Appendix B – pg. 58** as the basis and amend accordingly.

pg.  
30 & 31

## Section 4.1, 4.2 Bí Cineálta



# Bí Cineálta Policy

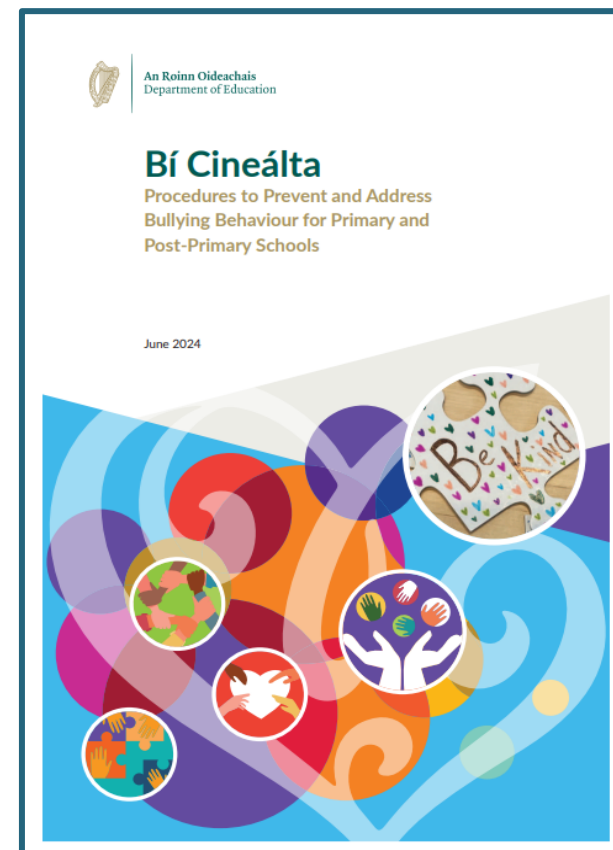
## Appendix A

**Section A:** Development/review of our  
Bí Cineálta Policy to Prevent  
and Address Bullying Behaviour

**Section B:** Preventing Bullying Behaviour

**Section C:** Addressing Bullying Behaviour

**Section D:** Oversight/Appendices



pg. 54



Oide

# Addressing and Recording Bullying Behaviour



Tacú leis an bhFoghlaim  
Ghairmiúil i measc Ceannairí  
Scoile agus Múinteoirí

Supporting the Professional  
Learning of School Leaders  
and Teachers



# Addressing Bullying Behaviour

**Section 6.1** Identifying if bullying behaviour has occurred

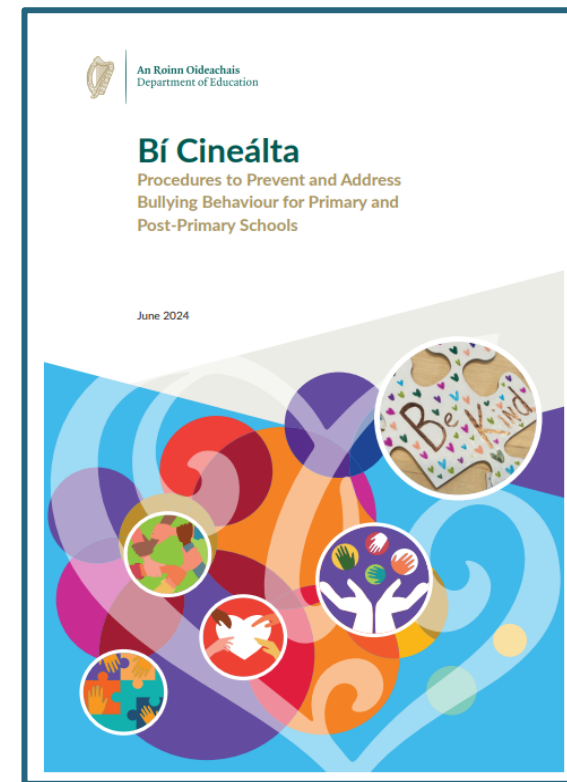
**Section 6.2** Where bullying behaviour has occurred

**Section 6.3** Requests to take no action

**Section 6.4** Determining if bullying behaviour has ceased

**Section 6.5** Recording bullying behaviour

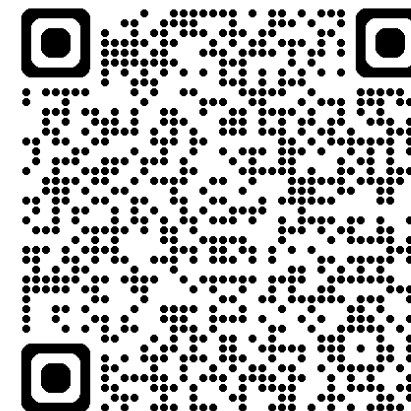
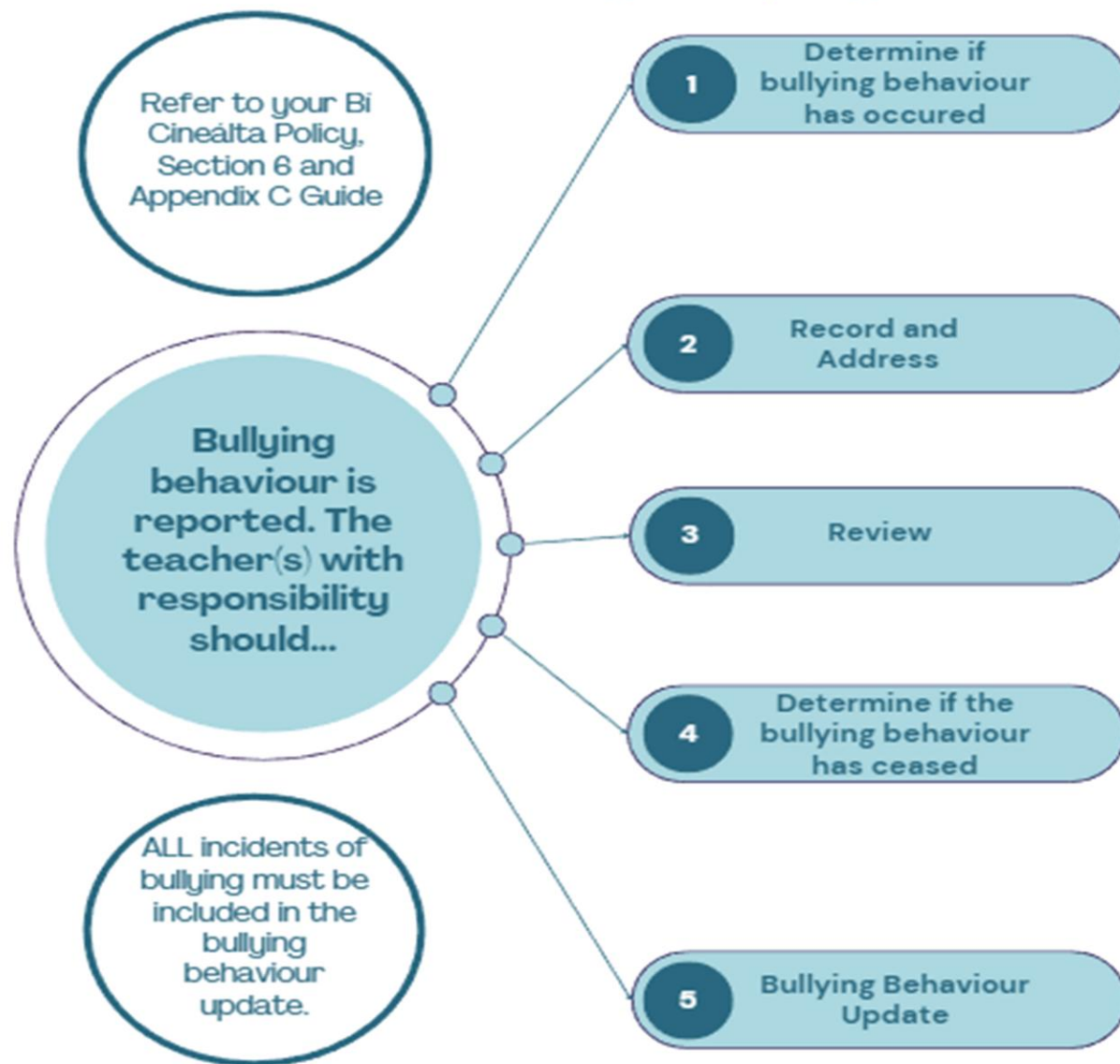
**Section 6.6** Complaints procedures







## Bí Cineálta: Addressing Bullying Behaviour





## Recording Bullying Behaviour

**All** incidents of bullying behaviour should be recorded. This record should document the following:

Form of bullying behaviour (Section 2.5)	Views of student(s)/parent(s) regarding the actions to be taken to address bullying behaviour
Type of bullying behaviour (Section 2.7)	Date of review with student(s)/parent(s) to determine if bullying behaviour has ceased and the views of students and their parents in relation to this
Where and when (if known)	Engagement with external services/supports (if any)
Date of initial engagement with student(s)/parent(s)	



### **Section 6.5, Bí Cineálta**

# When Bullying becomes a Child Protection Concern

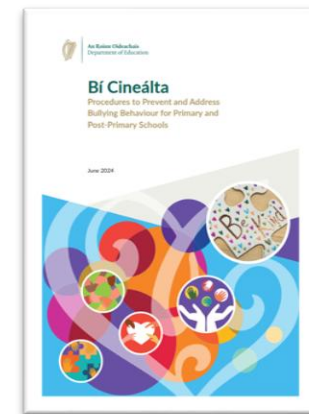


Oide

Generally, bullying behaviour can be addressed without the involvement of Tusla. However, bullying behaviour can become a child protection concern when it results in significant physical or emotional harm, or where it becomes a persistent and severe problem and measures taken to address it are not effective.

In determining when bullying behaviour should be reported to Tusla, the following factors should be considered:

- Impact on the child
- Protective/appropriate action taken by parents/guardians
- Protective/appropriate action taken by school
- Involvement of NEPS
- Engagement of child/family with support services



## ***Section 2.4, Bí Cineálta***

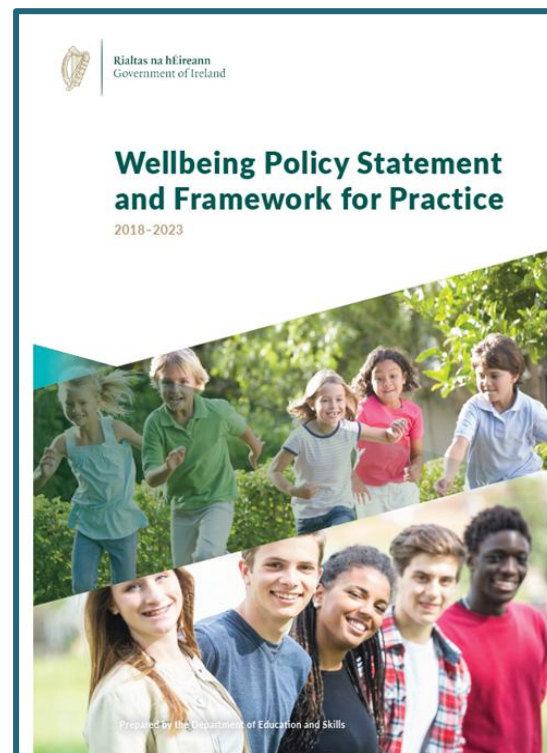
Tacú leis an bhFoghlaim  
Ghairmiúil i measc Ceannairí  
Scoile agus Múinteoirí

Supporting the Professional  
Learning of School Leaders  
and Teachers



Oide

# Preventing Bullying Behaviour



Tacú leis an bhFoghlaim  
Ghairmiúil i measc Ceannairí  
Scoile agus Múinteoirí

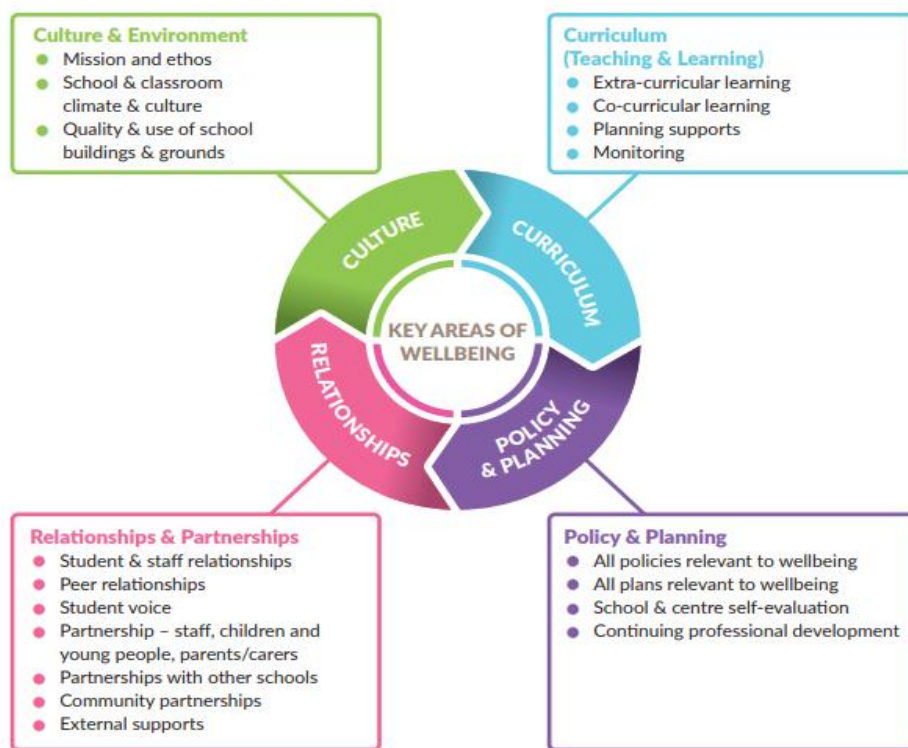
Supporting the Professional  
Learning of School Leaders  
and Teachers



# Preventing Bullying Behaviour

The Wellbeing Policy Statement and Framework for Practice provides the following four key areas that are essential for a holistic, whole school approach to wellbeing promotion:

Figure 2: Whole School Approach - Four Key Areas Wellbeing Promotion



Can you share from your school context?





# Bí Cineálta: Prevention Strategies



Oide

**Section 5.5**  
Preventing  
cyberbullying

**Section 5.6**  
Preventing  
homophobic/  
transphobic  
bullying

**Section 5.7**  
Preventing  
racist bullying

**Section 5.8**  
Preventing  
sexist bullying

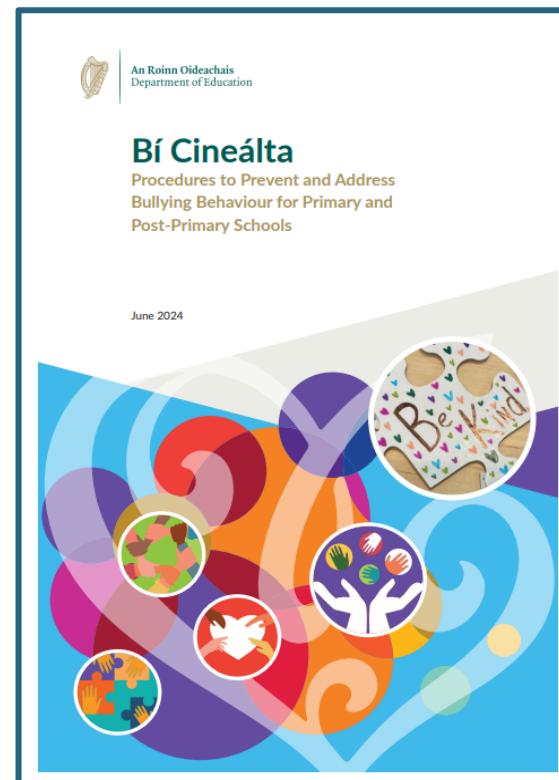
**Section 5.9**  
Preventing sexual  
harrassment

pg.  
39-41





# Oversight



Section 7  
pg. 50



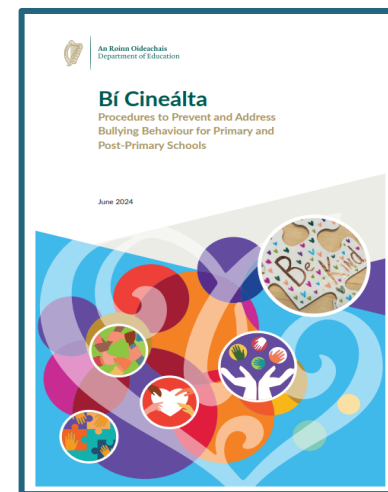
# Bullying Behaviour Update

At **each** meeting of the board of management, the principal **must** present a bullying behaviour update. **Appendix D** provides a guide to supporting principals in this regard.

The update **must** include the following:

- *the number of incidents of bullying behaviour that have been reported since the last meeting*
- *the number of incidents of bullying behaviour that are currently ongoing*
- *the number of incidents of bullying behaviour that have been reported since the beginning of the school year*

Where incidents of bullying behaviour have been reported since the last meeting, the update must include a verbal report.



## Section 7.1, Bí Cineálta

# Annual Review



Oide

A school's Bí Cineálta policy **must be reviewed each calendar year** or as soon as is practicable where the board of management determines a review is warranted.

The review should be completed with input from all stakeholders:

*Board of Management*

*Students*

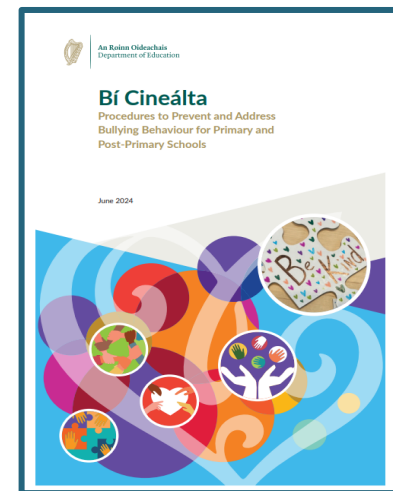
*Staff*

*Parents*

**Appendix E** must be completed to confirm that all aspects of the annual review are completed.

**Appendix F** can be used to give notice that the annual review has taken place. This can be published on the school website once the review has taken place.

## ***Section 7.2, Bí Cineálta***



pg. 51

# Development of a national database to facilitate data on bullying behaviour



Oide

As part of the Cineáltas Action Plan on Bullying, the Department of Education and Youth is progressing the development of a national database to facilitate data on bullying behaviour being collated in an anonymised manner with a view to informing an annual national report on bullying behaviour in schools.

This information will not identify individual schools or students.

This database is in development phase and further information will be provided to schools in due course.



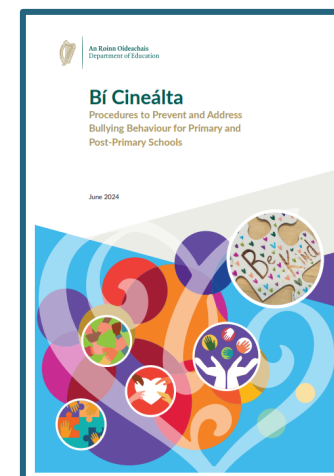
pg. 51

## Section 7.3, *Bí Cineálta*



## Summary of Appendices

Appendix A	Bí Cineálta policy	<b>Must</b> be used as a basis for each school's Bí Cineálta policy.
Appendix B	Student Friendly Bí Cineálta policy	<b>Must</b> be developed by each school. Template <b>can</b> be used for this.
Appendix C	Guide to Addressing Bullying Behaviour	Guide <b>can</b> be used to address bullying behavior.
Appendix D	Guide to providing bullying behaviour update to the board of management	Guide <b>can</b> be used to assist Principals in providing bullying behaviour update to the board of management.
Appendix E	Review of Bí Cineálta policy	<b>Must</b> be completed when the Bí Cineálta policy is reviewed.
Appendix F	Notification of Annual Review	<b>Can</b> be used to notify the schools community that the annual review has been completed.
Appendix G	Bí Cineálta-Overview of the Procedures	Overview of the key areas of change from the 2013 anti-bullying procedures.



# Possible Next Steps Taken by Schools



Oide

- Consult with parents, pupils and the wider school community
- Audit prevention strategies
- Develop a Bí Cineálta and Student Friendly Bí Cineálta Policy
- Share policy with the school community and publish on the school website
- Engage in review process



Oide