



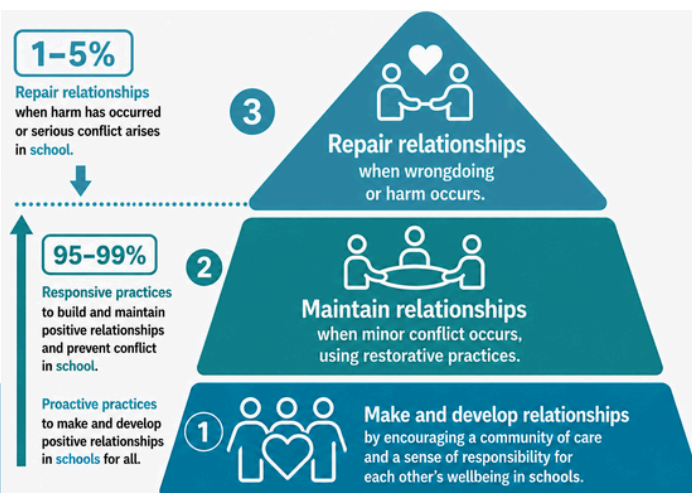
RP in Everyday School Life

Restorative Practice is not only used when difficulties arise; instead, RP prioritises helping schools to build positive relationships, strengthen wellbeing and create caring, inclusive learning environments where every voice matters.

RP, as a part of everyday school life, includes a range of approaches such as:

- Relationship-building activities
- Emotional literacy development
- Circles
- Restorative Language
- Restorative Conversations
- Restorative Meetings
- Collaborative problem-solving

‘Pyramid’ of RP



Adapted from Morrison, B. (2005)

A Values Based Philosophy

Restorative Practice is based on core values:

- Fairness
- Respect
- Inclusion
- Accountability
- Empathy
- Safety

A Relationship Centred Approach

Relationships are at the heart of every school community. Restorative Practice is more than a behaviour strategy, it is a relationship-centred way of working that helps schools create cultures of dignity, safety and a sense of belonging for everyone.

Working ‘WITH’ Children

Restorative Practice focuses on working WITH children.

This helps children to:

- Develop positive self efficacy
- Realise their potential
- Feel supported
- Learn from mistakes
- Feel heard and valued

An Overview of Restorative Practice for School Communities

WHAT IS RP?

Restorative Practice (RP) involves both a values based philosophy and an evidence-based set of skills that help develop and sustain strong and happy school communities by actively promoting good relationships, preventing the escalation of conflict, and handling harm creatively and healthily.

RP is preventative and transforms the way people engage with one another. RP is more than just a programme; it is a way of being that embodies a philosophy deeply rooted in particular values. RP promotes school connectedness by building a foundation of strong relationships, respect, empathy, responsibility and trust.

THE RESTORATIVE APPROACH



Restorative Circles

Circles are an important Restorative Practice approach used in many Irish schools.

In a circle:

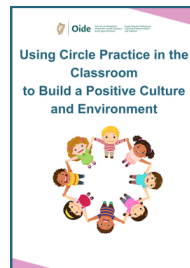
- Everyone can see each other
- Everyone has an opportunity to speak
- Everyone is listened to respectfully

Circles help children to:

Develop communication skills
Build trust and connection
Solve problems collaboratively
Strengthen confidence
Experience a sense of belonging

"I like the circle because it helps me feel welcome and calm in the classroom" -
3rd Class pupil

"Circles help to build equity, respect, trust and safety among our students" -
Post-primary teacher



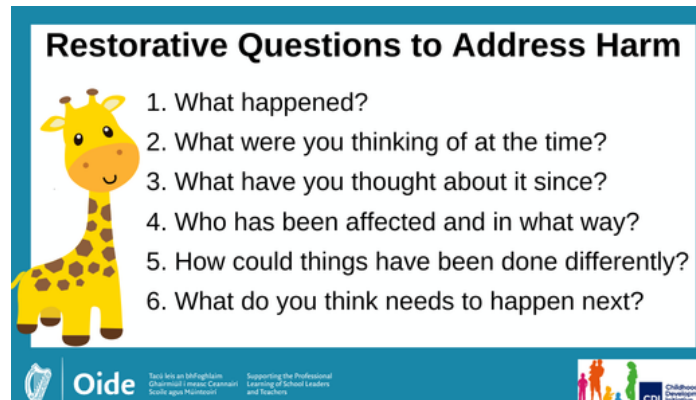
Responding to Conflict

Restorative Conversations and Restorative Meetings are used by schools implementing RP to respond to conflict. Using the RP questions; schools facilitate calm, respectful and solution-focussed discussions. This supports children in reflecting on their behaviour, understanding the impact of their actions on others and taking responsibility to be part of the solution.

RP Conversations and Meetings support children to:

- Take Responsibility
- Build Empathy
- Develop Emotional Awareness
- Strengthen Communication Skills
- Repair Harm
- Learn Positive Ways to Deal with Conflict

? RP Questions ?



Restorative Questions to Address Harm

1. What happened?
2. What were you thinking of at the time?
3. What have you thought about it since?
4. Who has been affected and in what way?
5. How could things have been done differently?
6. What do you think needs to happen next?

Oide logo and text: "Oide - The Irish Organisation for Quality in Education", "Supporting the Professional Learning of School Leaders and Teachers", "Childhood Development Initiative (CDI) logo".

Supporting RP at Home

Restorative Practice works best when schools and families work together in supporting children to experience the benefits and develop important lifelong skills that Restorative Practice promotes.

Parents/Guardians can support and enhance restorative approaches at home by:

- ✓ Using the RP questions to resolve conflict
- ✓ Supporting reflection
- ✓ Modelling respectful communication
- ✓ Supporting emotional language
- ✓ Helping children problem solve
- ✓ Encouraging empathy



Further Information & Resources:

[OIDE Primary Wellbeing Website](#)
[Childhood Development Initiative](#)
[Restorative Practices Ireland](#)
[Circles of Connection Podcasts](#)