



Oide

Tacú leis an bhFoghlaim
Ghairmiúil i measc Ceannairí
Scoile agus Múinteoirí

Supporting the Professional
Learning of School Leaders
and Teachers

DEIS ag Obair: Céimeanna Praiticiúla le hAthrú Bríoch Intomhaiste

*Making DEIS Work: Practical Steps for Meaningful,
Measurable Change*
Session 2

Facilitator:



Conair Foghlama Gairmiúil

Professional Learning Pathway



Oide



Fiosrúchán Tosaigh

Check-In



Oide

How confident do you feel about the
impact of your current DEIS
planning process?



Cuspóir an tSeisiúin

Session Intention



Oide

To develop skills in gathering and critically analysing data effectively to inform and support evidence-based decisions in DEIS Planning.



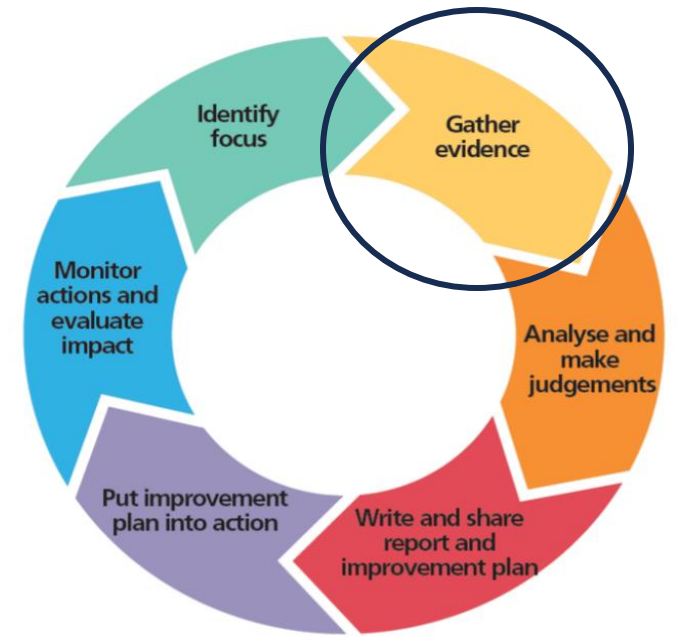
Fianaise a Bhailiú - Cén Fáth?

Gathering Evidence – The Why?



Oide

- To establish a baseline and inform decisions that improve pupil outcomes.
- To evaluate what's working and what needs improvement.
- To support targeted, needs-based planning.
- To build a shared understanding across the school community.





Fianaise a Bhailiú

Gathering Evidence

- Key question - '**Why** am I collecting this data?'
- What data is **already** available?
- **Be specific** about the data you need.
- **Where** will you get further information from if needed?
- Be clear about **who** will you get information from?
representation, how many, types of data, etc.



Foinsí Eolais

Data Sources



Oide

Quantitative

Attendance Records Data

Standardised Testing Results

Classroom-based Assessment Results

Running Records

Frequency Charts

Surveys (e.g. Rating Scales)

Qualitative

Interviews

Focus Groups

Case Studies

Pupil Projects and Portfolios

Teacher Reflections

Teacher Observations

Writing Samples

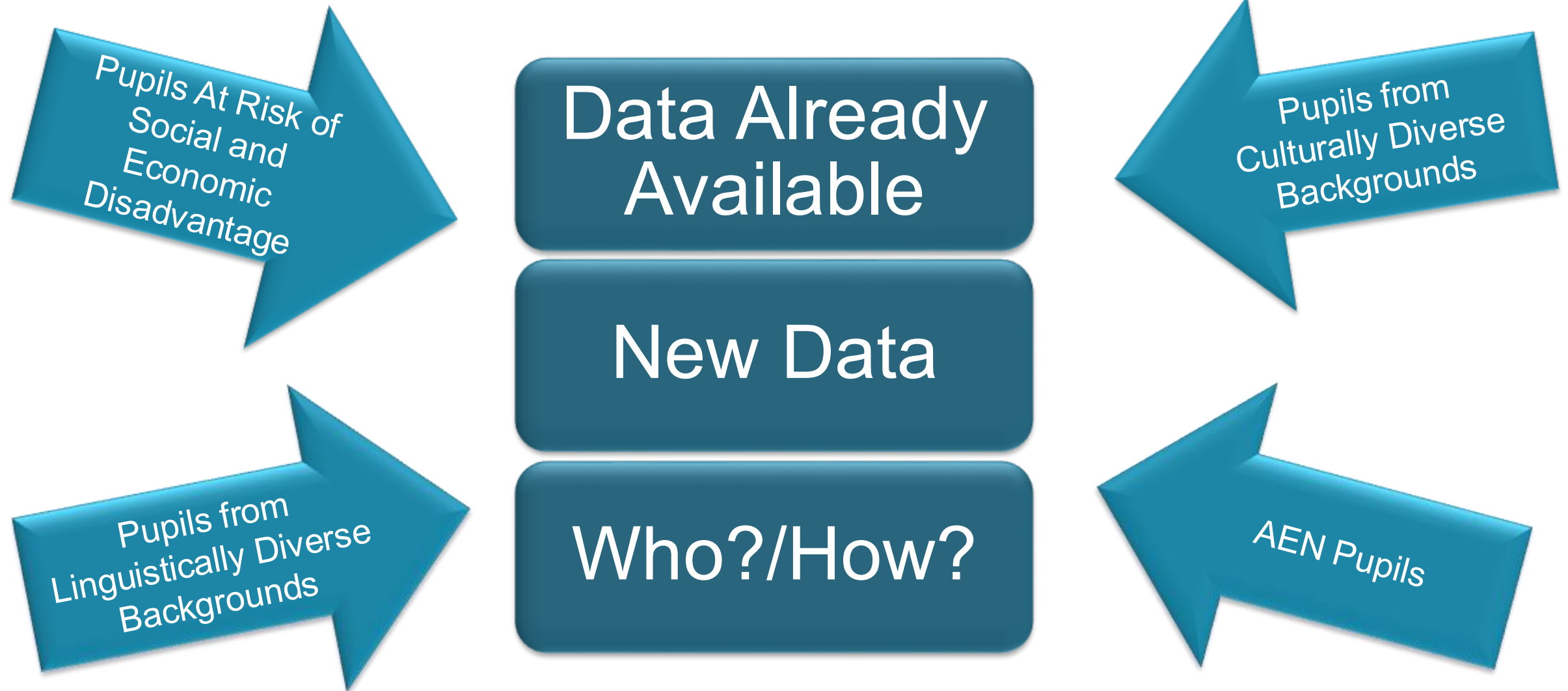
Surveys (e.g. Open-ended Questions)

Fianaise a Bhailiú

Gathering Evidence



Oide



Cás Stáidéar

Case Study



Oide

Context:

Oak National School is a DEIS Band 2 urban primary school with 320 pupils. The school serves a community with varying levels of socio-economic disadvantage. The staff is committed to improving literacy outcomes and based on teacher observations and reflections, recently identified **writing** as a key area for development.

Area of Focus:

After looking at the learner outcomes in the PLC, the staff narrowed their focus to the learner outcome **conventions of print and sentence structure** as they feel this is a need for improvement across the school.

What specific data should the school gather to establish a baseline target?

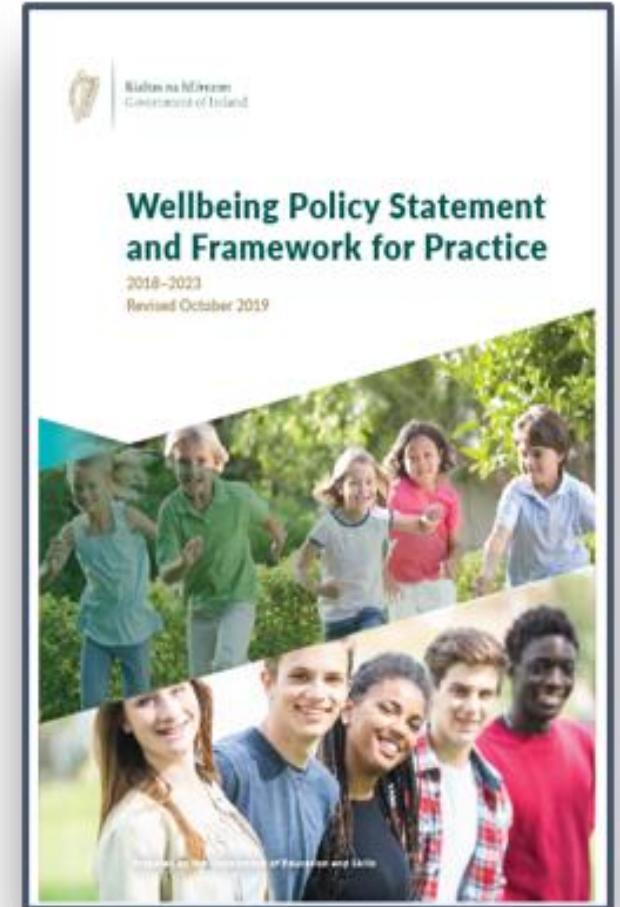
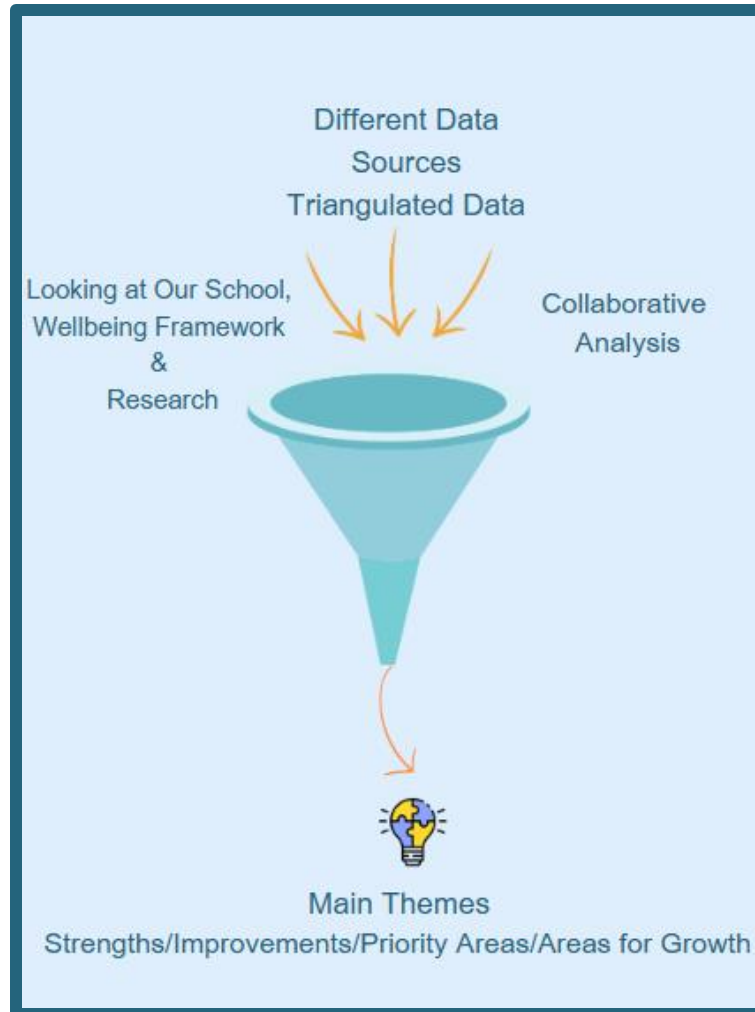
Who might they need to gather the data from?

Príomh Dhoiciméid

Key Documents



Oide



Machnamh *Reflection*



Oide

Considering your chosen area of focus reflect on the data currently available in your school:

- What does this data tell you about your selected area?
- Does this data tell you the full story? Who does this data represent?
- What additional data might we need to gather to support deeper understanding ?

Plé

Discussion



Oide

Following your reflection, discuss in a breakout room what your next steps are and how you will achieve them?

Nominate a reporter.

**Involvement of Leadership
Team**

Staff Buy-In

Clear Communication

Time



Treoir Phrionsabail DEIS

Guiding Principles of DEIS

Equality of educational opportunity for those who come to education at a disadvantage

Teaching and learning actions should be evident across the six themes of DEIS

The process of planning for DEIS should be an inclusive, reflective, and collaborative whole school process

The aim is to improve the learning experiences and outcomes of all pupils, especially the at-risk pupils



Na Chéad Chéimeanna Eile ... *Next Steps....*

Session 3 will focus on Target-Setting

In advance of this

- Please **review the data and evidence** related to your chosen theme.
- Bring this evidence to the next session to help guide your thinking around setting meaningful and realistic targets for your school.



Cuspóir an tSeisiúin

Session Intention



Oide

To develop skills in gathering and critically analysing data effectively to inform and support evidence-based decisions in DEIS Planning.

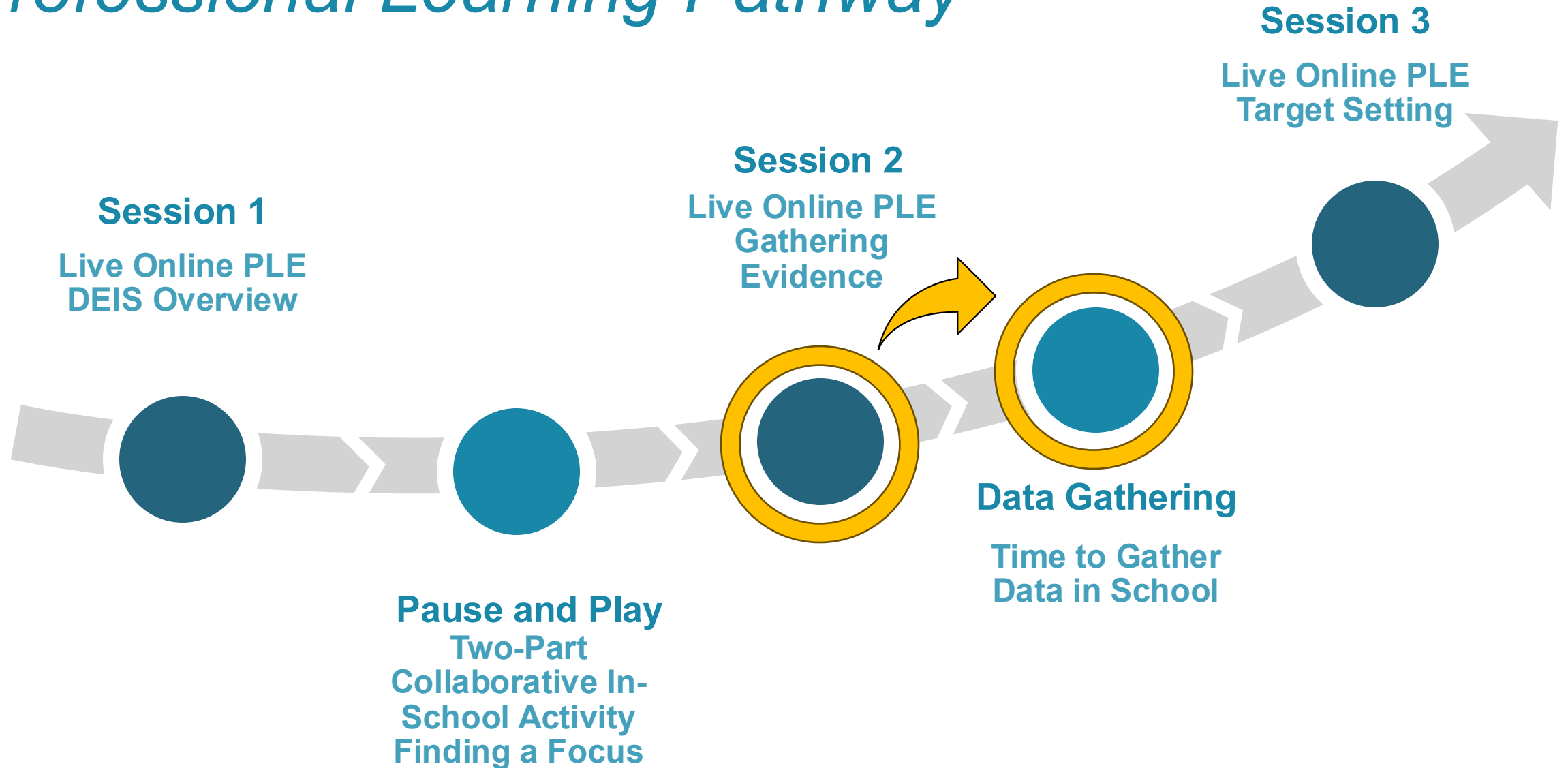


Conair Foghlama Gairmiúil

Professional Learning Pathway



Oide



Tagairtí References



Oide

Oide.ie – Primary – Inclusive Education – DEIS





Oide

Tacú leis an bhFoghlaim
Ghairmiúil i measc Ceannairí
Scoile agus Múinteoirí

Supporting the Professional
Learning of School Leaders
and Teachers

Go raibh maith agat as do
rannpháirtíocht.

Thank you for your engagement.