



Oide

# Santa's Sleigh Safety Investigation

Every Christmas Eve, Santa and the reindeer race across the world at amazing speed - but there's one thing that keeps slowing them down: the roofs!

Some are smooth.

Some are bumpy.

Some are icy, shiny, slippery, snowy, slatey, tiled, mossy... and poor Rudolph never knows what they're about to land on.

Last year, Santa sighed as the sleigh slid halfway down a shiny metal roof in Finland. In Canada, it stuck on a super-grippy rubber roof. In Ireland, it bounced on a roof covered in sparkly tinsel decorations (the reindeer still refuse to talk about that night). After Christmas, Santa called a big meeting. "Ho, Ho, NO," he said. "We keep losing time trying to steady the sleigh. Every roof is different! But it's much easier for each house to prepare one small landing strip... than for me to keep changing the runners on the sleigh every few minutes!"

So Santa has asked us, the scientists and engineers, to help.





Oide

Dear Young Scientists,

Ho ho ho! I have a problem: my sleigh keeps slipping when I land on roofs.

I need you to carry out a scientific investigation to help me.

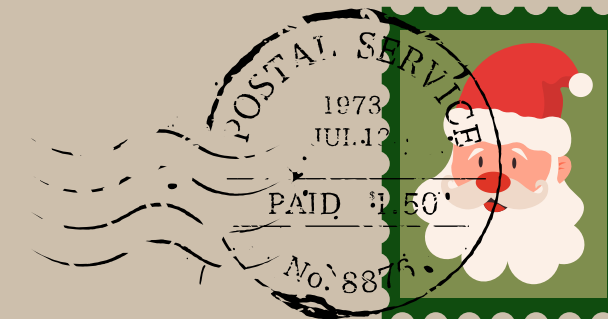
These questions might help you.

- What are we going to find out?
- What are we going to do?
- What do we think will happen?
- What do we see?
- What do we notice?
- What did we find out?

Thank you for using your scientific inquiry skills to keep my sleigh safe!

Love,

Santa



Handwriting practice lines consisting of five horizontal rows. Each row is defined by a dashed green line at the top and a dashed red line at the bottom, with a solid green line in the middle. The lines are decorated with small red and green dots.



Oide



Ho Ho Ho Young Scientists,  
I have a problem with my sleigh: it keeps slipping when I land on roofs.  
I need you to carry out a scientific investigation to help me.  
These questions might guide you:

- What are we going to investigate?
- How will we carry out our investigation?
- What will we observe?
- What will we measure?
- What did we find out?
- What can we infer?

Thank you for working like a Scientist to keep my sleigh safe!  
Love,  
Santa

---

---

---

---

---



Oide

## Santa's Sleigh

What Might We Use for our investigation?



- TIN FOIL
- GREASEPROOF PAPER
- SANDPAPER
- DENIM
- CARDBOARD
- BUBBLE WRAP
- MICROFIBRE CLOTH
- FOAM
- 400G CAN

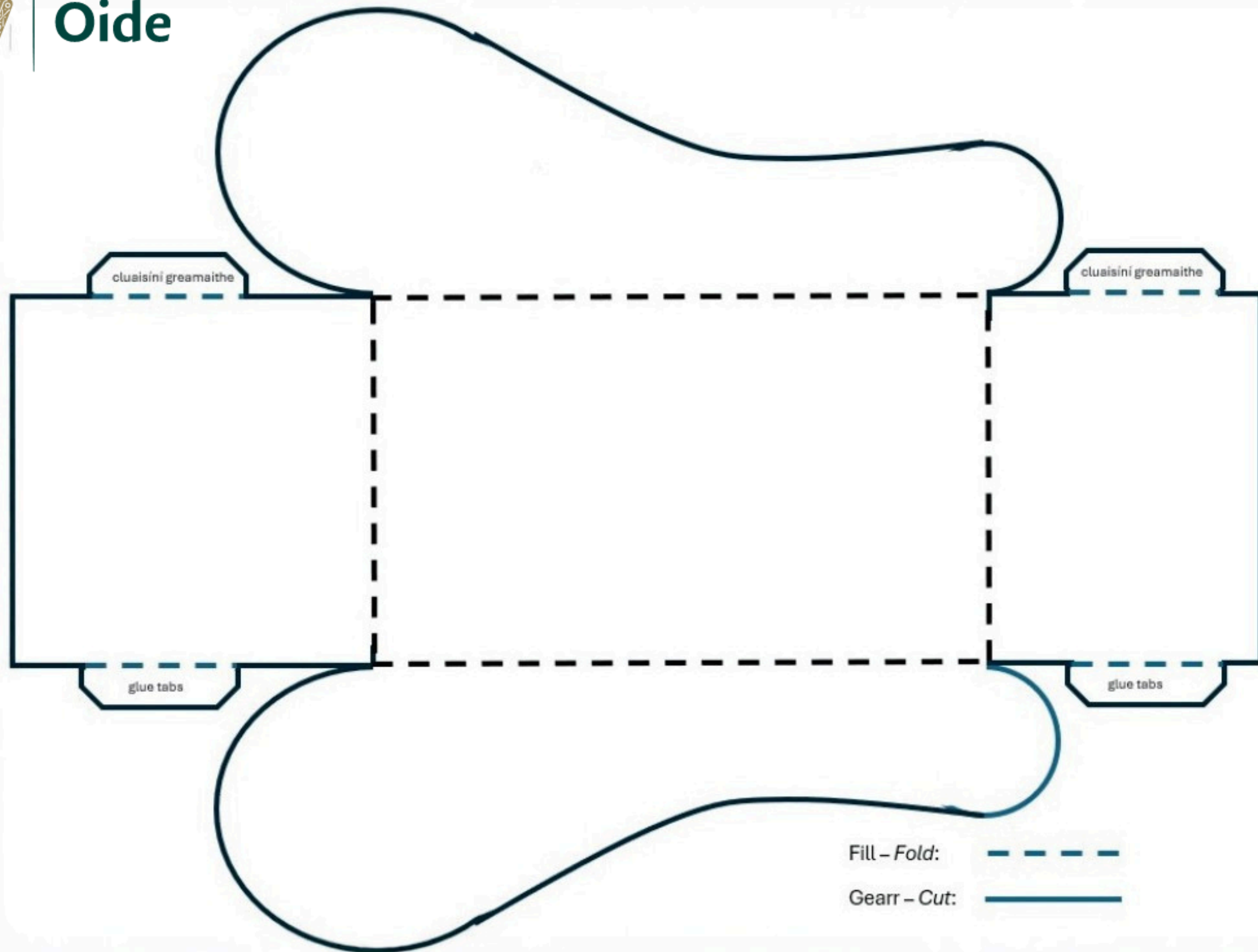


DOWNLOAD THIS PDF TO DECORATE YOUR SLEIGH.





# Oide



Fill – Fold: 

Gearr – Cut: 